

Supporting Information

for

Synthesis of chiral mono(N-heterocyclic carbene) palladium and gold complexes with a 1,1'-biphenyl scaffold and their applications in catalysis

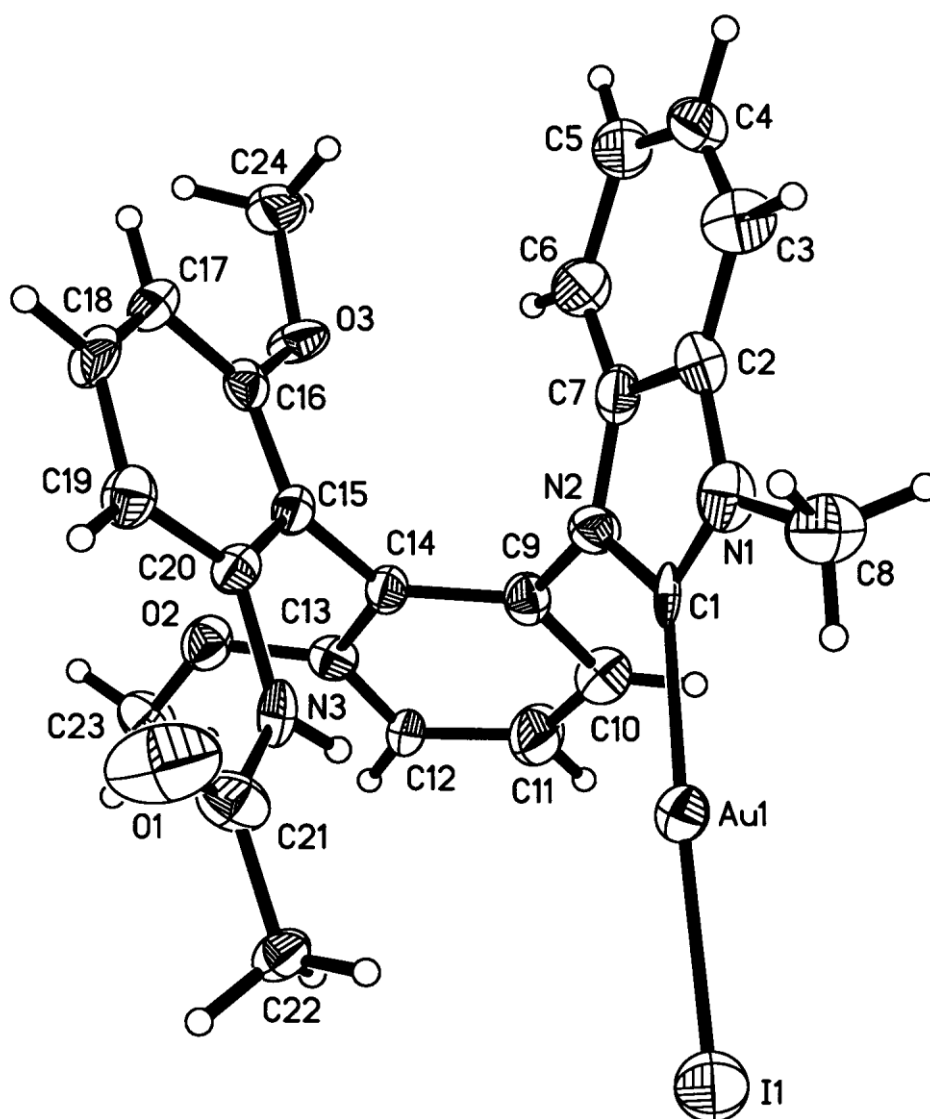
Lian-jun Liu¹, Feijun Wang¹, Wenfeng Wang¹, Mei-xin Zhao¹ and Min Shi^{*1,2}

Address: ¹Key Laboratory for Advanced Materials and Institute of Fine Chemicals, School of Chemistry & Molecular Engineering, East China University of Science and Technology, 130 MeiLong Road, Shanghai 200237, People's Republic of China and ²State Key Laboratory of Organometallic Chemistry, Shanghai Institute of Organic Chemistry, Chinese Academy of Sciences, 354 Fenglin Road, Shanghai 200032, People's Republic of China, Fax: 86-21-64166128

Email: Min Shi* - Mshi@mail.sioc.ac.cn

*Corresponding author

Crystal structure data for NHC–Au(I) complex 6a



The crystal data of **6a** have been deposited in CCDC with number 782844. Empirical Formula: $C_{24}H_{23}AuIN_3O_3$; Formula Weight: 725.32; Crystal Color, Habit: colorless, prismatic; Crystal Dimensions: 0.277 x 0.268 x 0.224 mm; Crystal System: Monoclinic; Lattice Type: Primitive; Lattice Parameters: $a = 9.2786(7)\text{\AA}$, $b = 25.5371(19)\text{\AA}$, $c = 10.1633(7)\text{\AA}$, $\alpha = 90^\circ$, $\beta = 104.9480(10)^\circ$, $\gamma = 90^\circ$, $V = 2326.7(3)\text{\AA}^3$; Space group: P2(1); $Z = 4$; $D_{calc} = 2.071\text{ g/cm}^3$; $F_{000} = 1376$; Diffractometer: Rigaku AFC7R; Residuals: R; $R_w = 0.0478, 0.1273$.