



Supporting Information

for

Sub-wavelength waveguide properties of 1D and surface-functionalized SnO₂ nanostructures of various morphologies

Venkataramana Bonu, Binaya Kumar Sahu, Arindam Das,
Sankarakumar Amirthapandian, Sandip Dhara and Harish C. Barshilia

Beilstein J. Nanotechnol. **2019**, *10*, 379–388. [doi:10.3762/bjnano.10.37](https://doi.org/10.3762/bjnano.10.37)

Additional experimental results

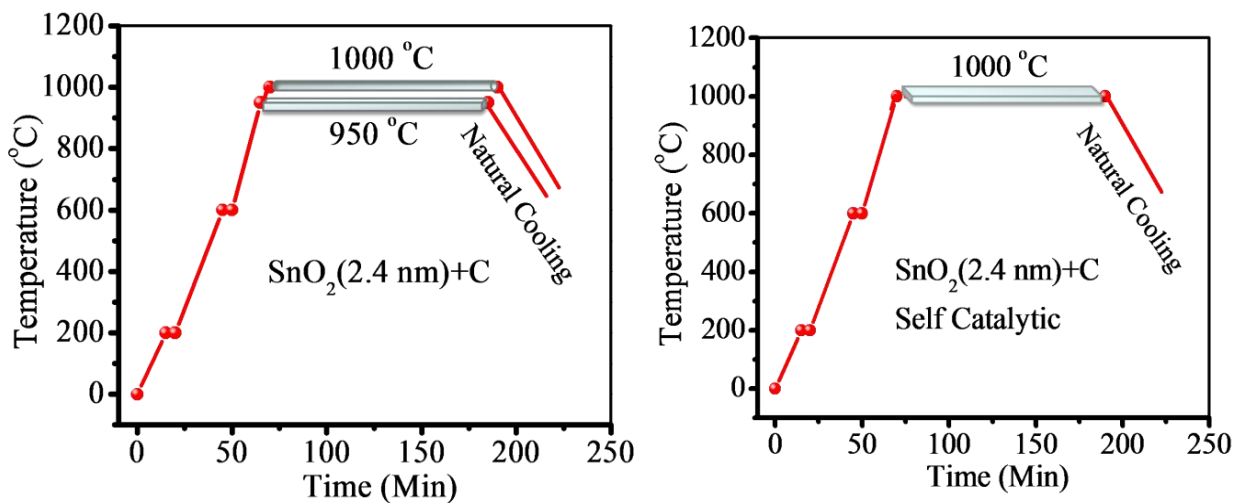


Figure S1: Temperature profile of the horizontal quartz tube furnace for (a) Catalytic VLS growth, (b) Non catalytic VS growth.

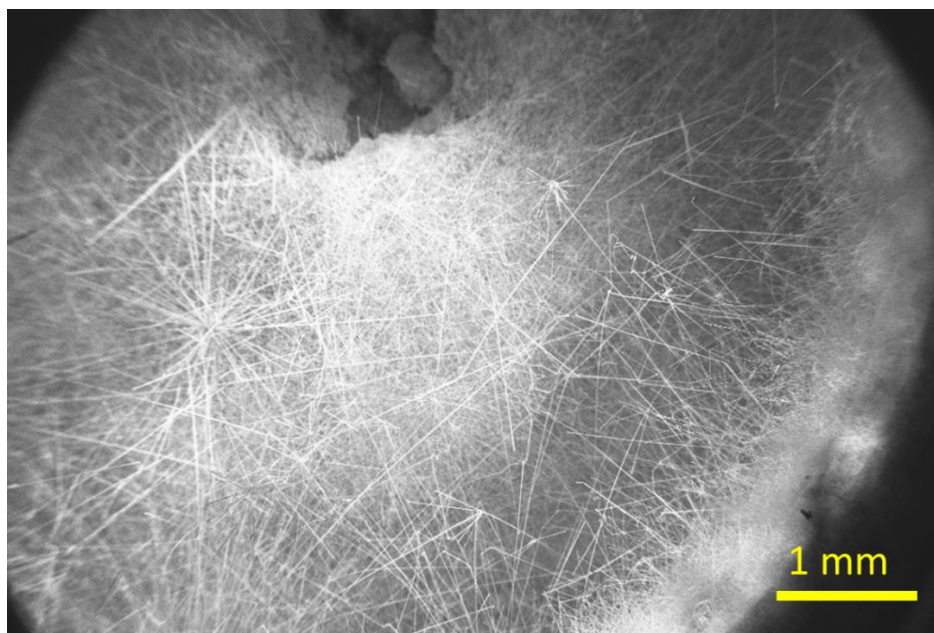


Figure S2: FESEM image of the nanobelts grown in the crucible.

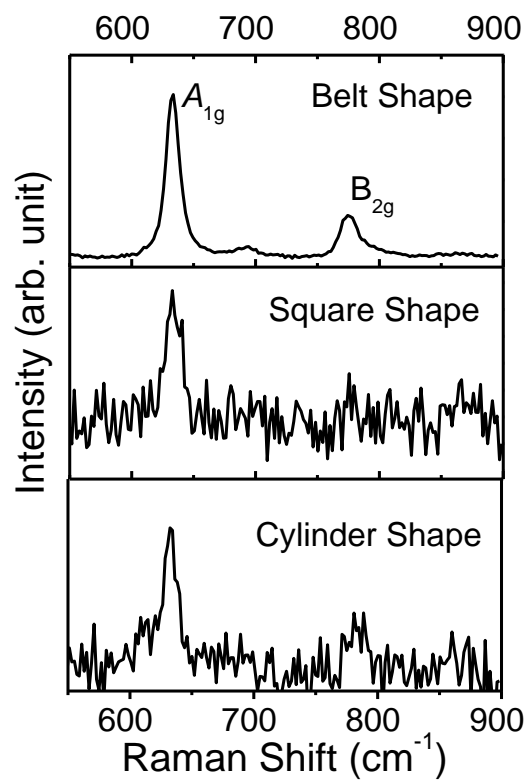


Figure S3: Raman spectra of the NWs.

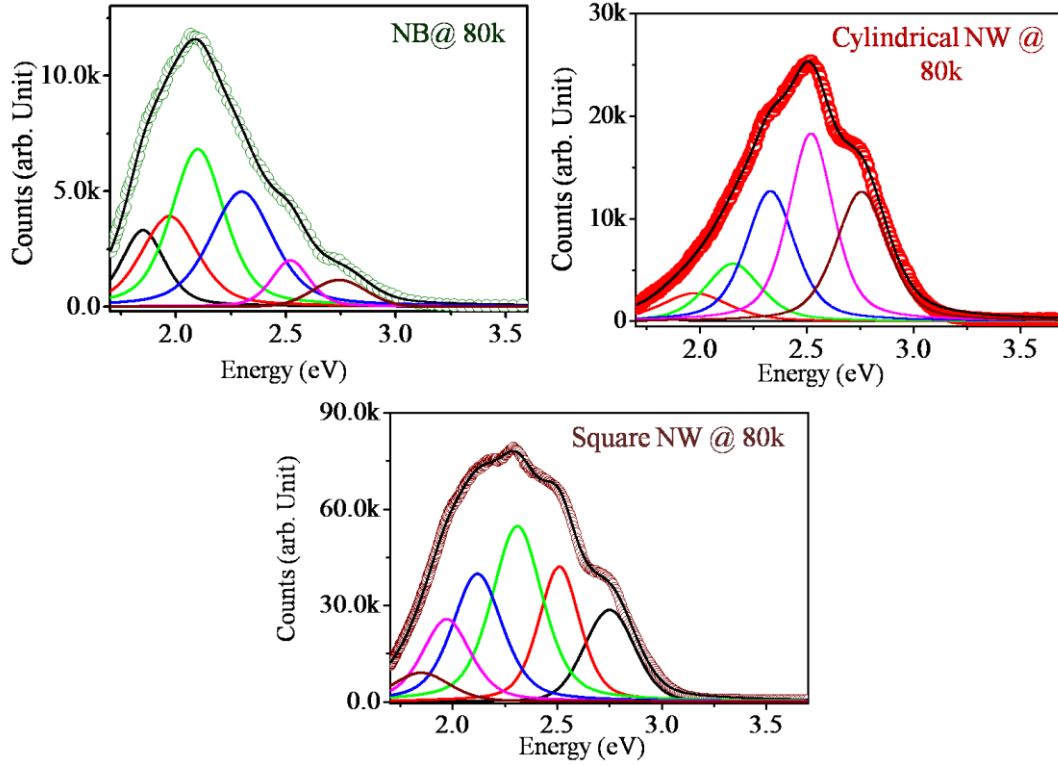


Figure S4: Gaussian fitting of the PL spectra @ 80K for (a) Belt, (b) Cylinder and (c) Square shaped NWs.

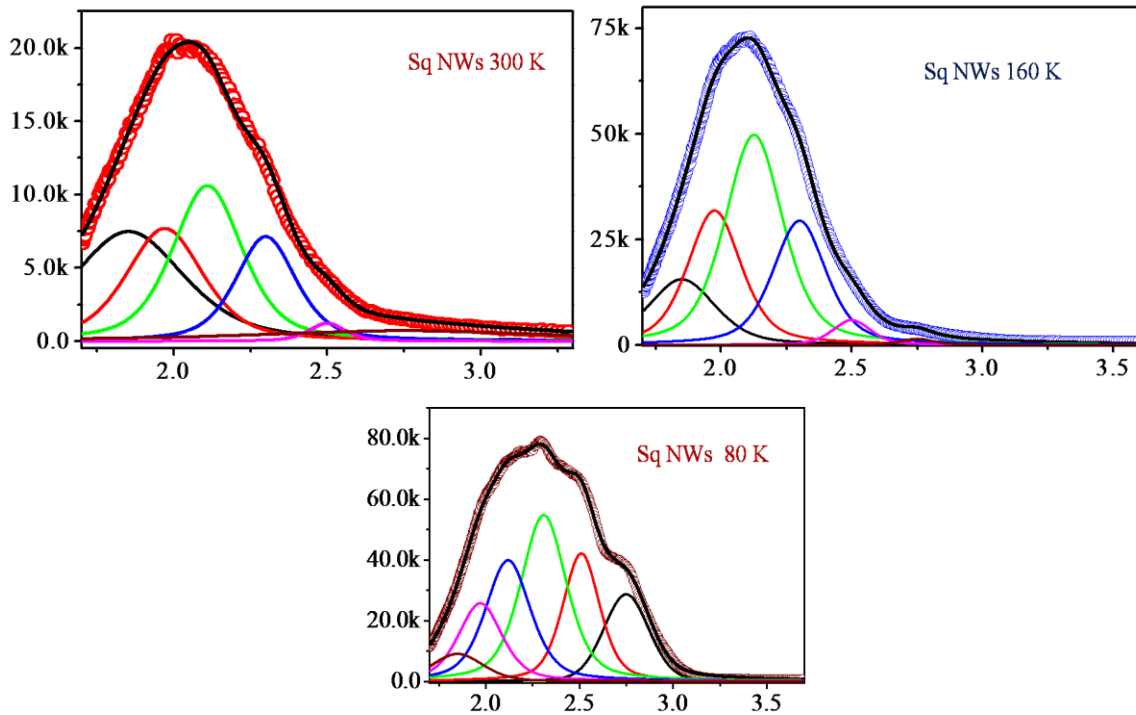


Figure S5 Gaussian fitting of the PL spectra of square shape NWs at (a) 300K, (b) 160K and (c) 80K.