



Supporting Information

for

An advanced structural characterization of templated meso-macroporous carbon monoliths by small- and wide-angle scattering techniques

Felix M. Badaczewski, Marc O. Loeh, Torben Pfaff, Dirk Wallacher, Daniel Clemens and Bernd M. Smarsly

Beilstein J. Nanotechnol. **2020**, *11*, 310–322. [doi:10.3762/bjnano.11.23](https://doi.org/10.3762/bjnano.11.23)

SEM images of the silica template and the carbon monolith (800 °C)

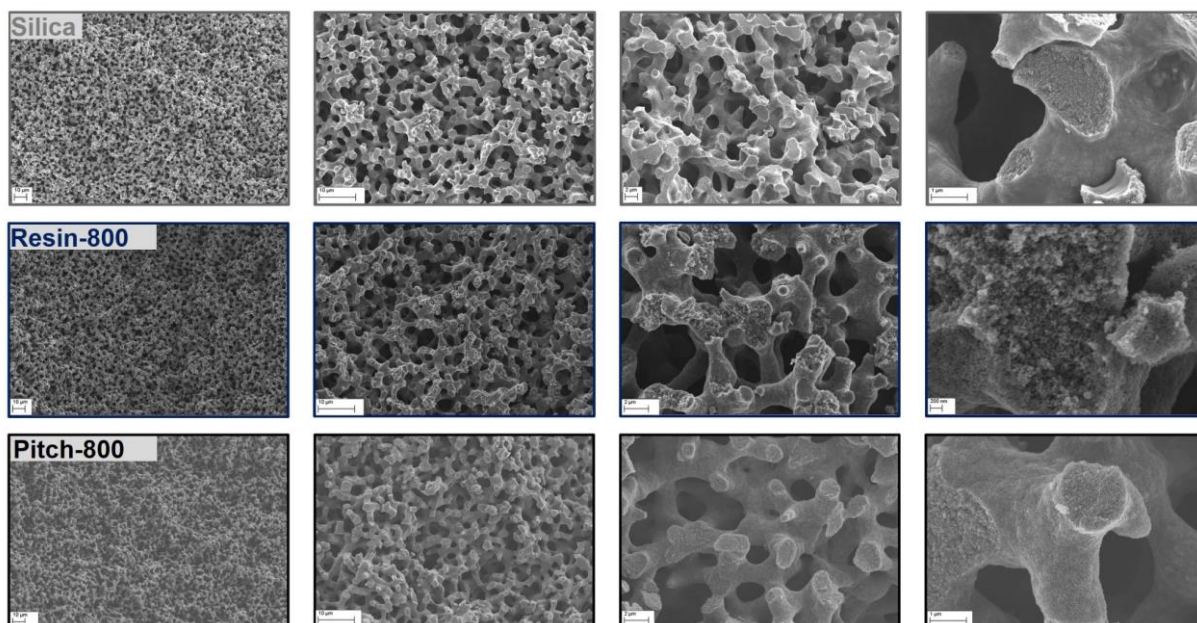


Figure S1: SEM pictures of the silica template (grey), the resin-based (blue) and the pitch-based (black) monolith carbonized at 800 °C.