



## Supporting Information

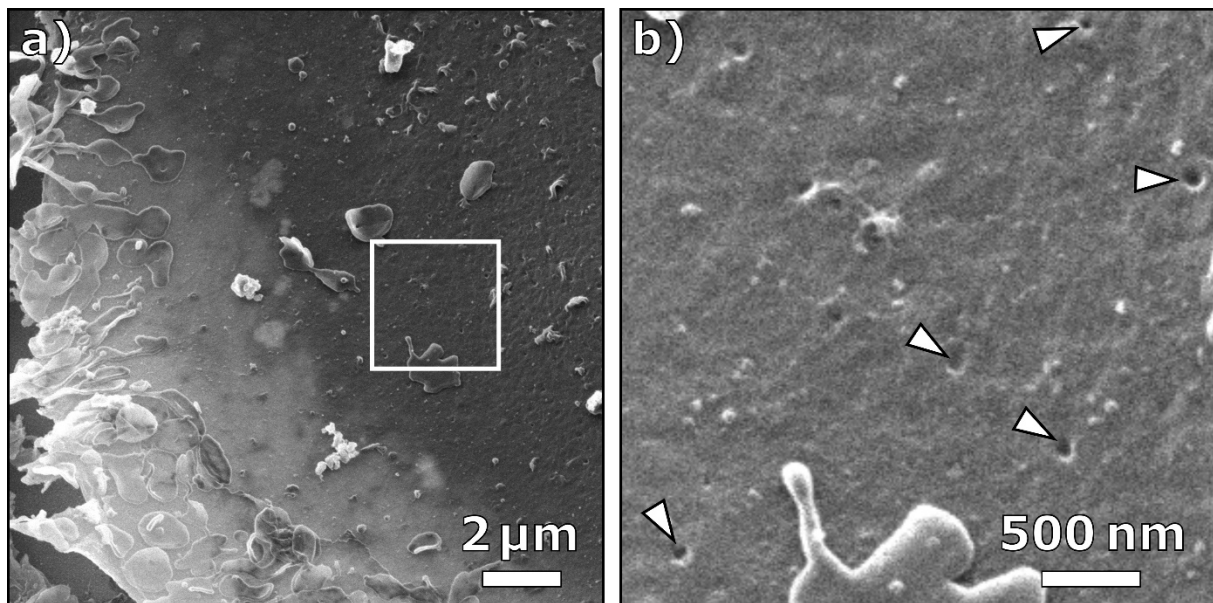
for

### Imaging of SARS-CoV-2 infected Vero E6 cells by helium ion microscopy

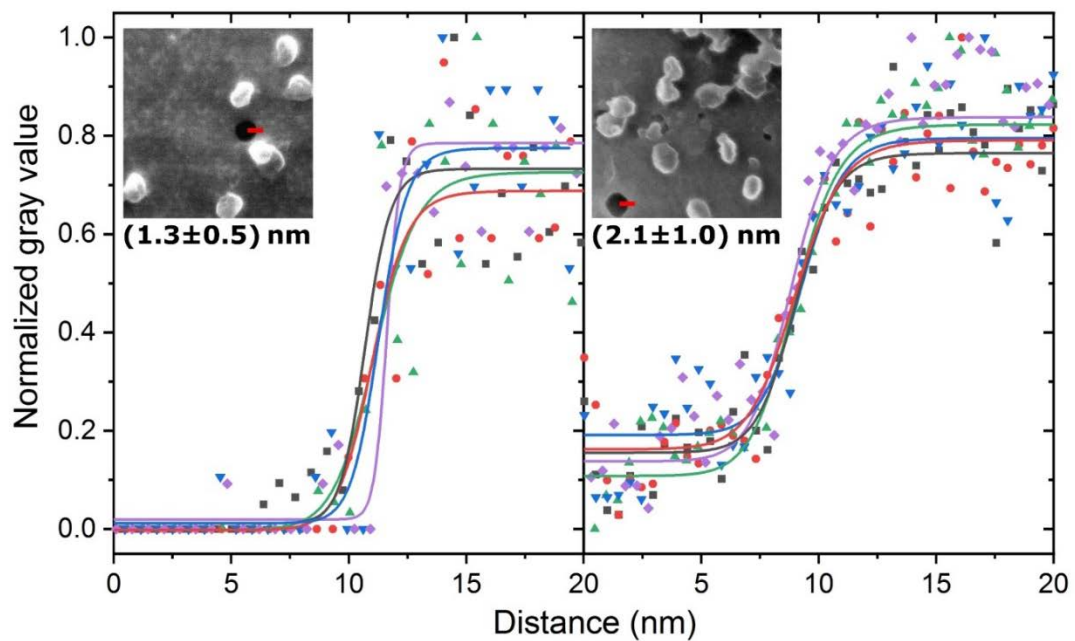
Natalie Frese, Patrick Schmerer, Martin Wortmann, Matthias Schürmann, Matthias König, Michael Westphal, Friedemann Weber, Holger Sudhoff and Armin Götzhäuser

*Beilstein J. Nanotechnol.* **2021**, *12*, 172–179. [doi:10.3762/bjnano.12.13](https://doi.org/10.3762/bjnano.12.13)

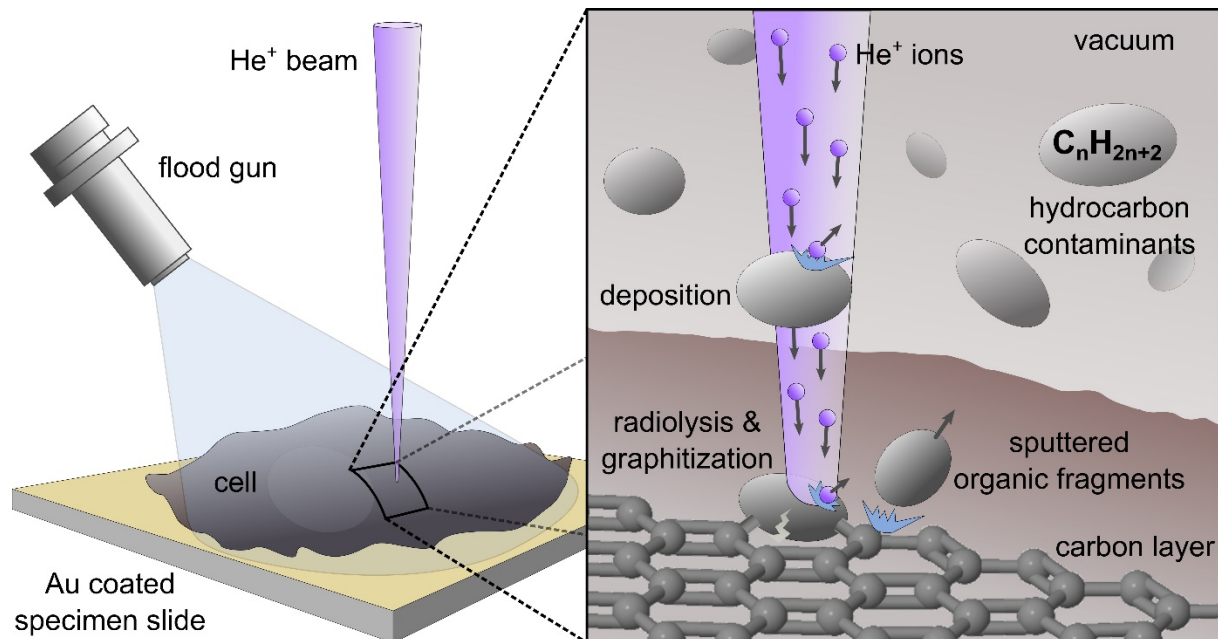
## Additional experimental data



**Figure S1:** HIM images showing holes in the cell membrane (arrowheads) of a mock infected Vero E6 cell.



**Figure S2:** Edge resolution of two HIM images, averaged over five gray-scale plots each that were fitted by logistic regression. The corresponding edges of holes in the cell membrane are shown in the inserted images (red lines); respective mean values and standard deviations of  $d_{25\%-75\%}$  are given below.



**Figure S3:** Schematic illustration of ion beam-induced deposition of hydrocarbons.