



Supporting Information

for

Evaluation of electrosynthesized reduced graphene oxide–Ni/Fe/Co-based (oxy)hydroxide catalysts towards the oxygen evolution reaction

Karolina Cysewska, Marcin Łapiński, Marcin Zajac, Jakub Karczewski, Piotr Jasiński and Sebastian Molin

Beilstein J. Nanotechnol. **2023**, *14*, 420–433. doi:10.3762/bjnano.14.34

Additional figures

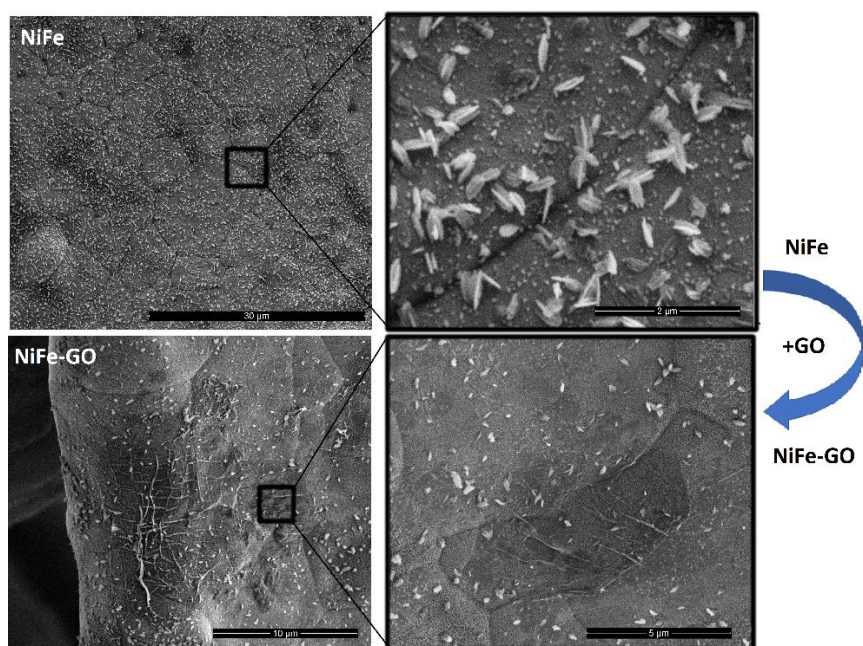


Figure S1: SEM images of NiFe and NiFe-GO.

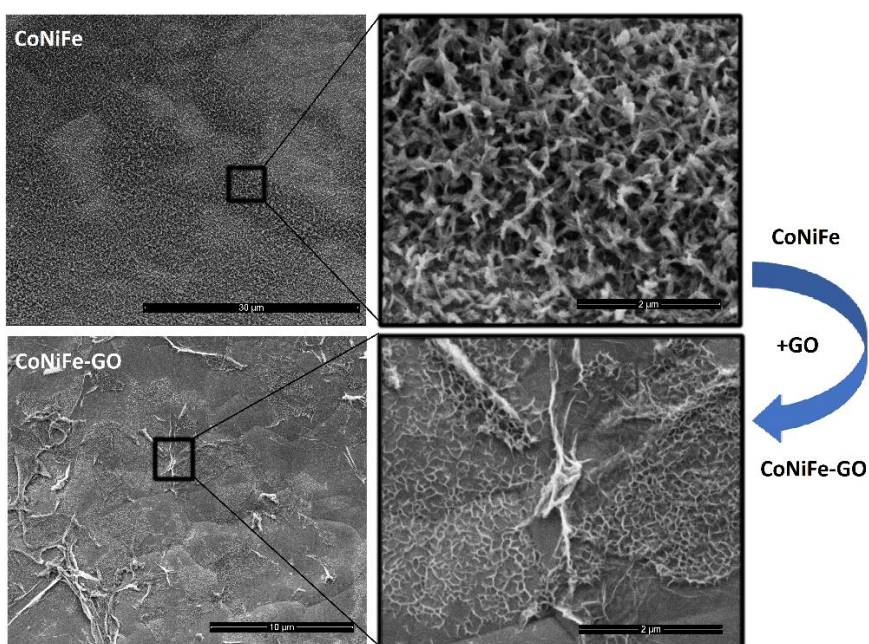


Figure S2: SEM images of CoNiFe and CoNiFe-GO.

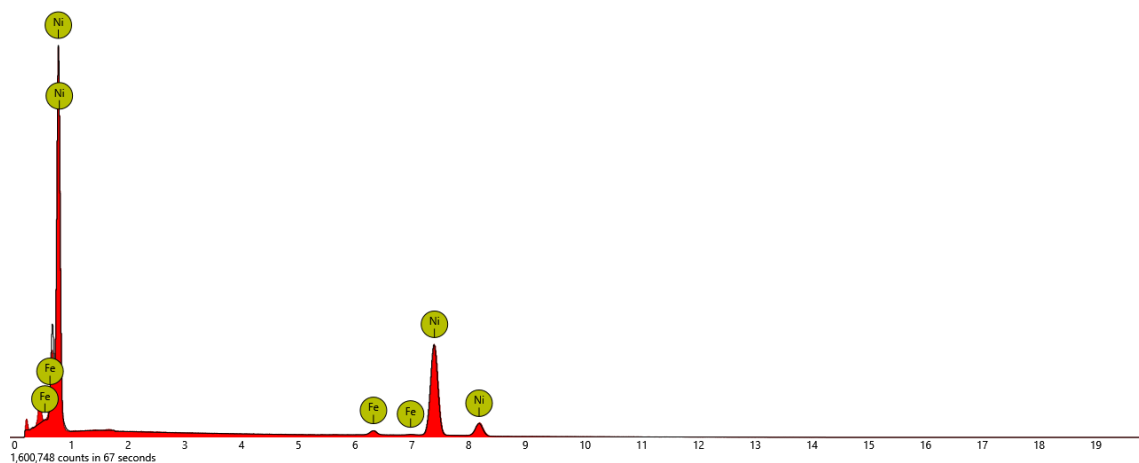


Figure S3: The content of the elements detected in NiFe-GO during EDX mapping.

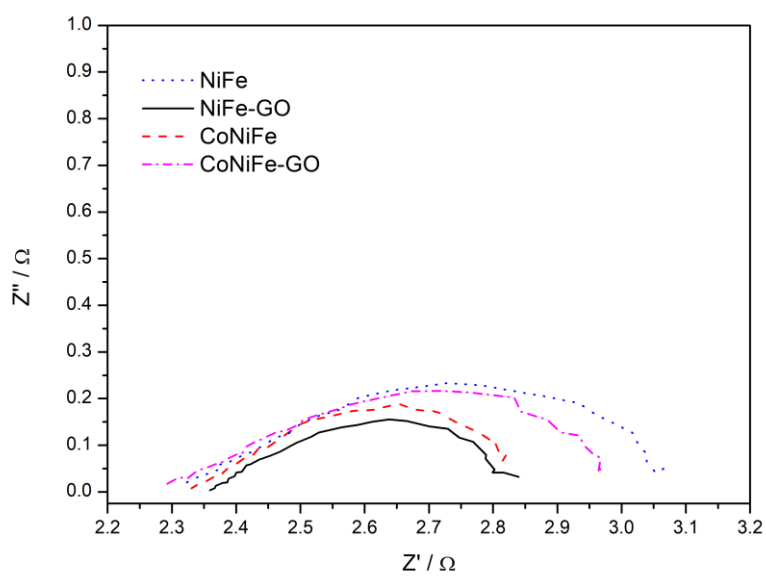


Figure S4: EIS spectra recorded at 1.6 V vs RHE in aqueous solution of 1 M KOH.

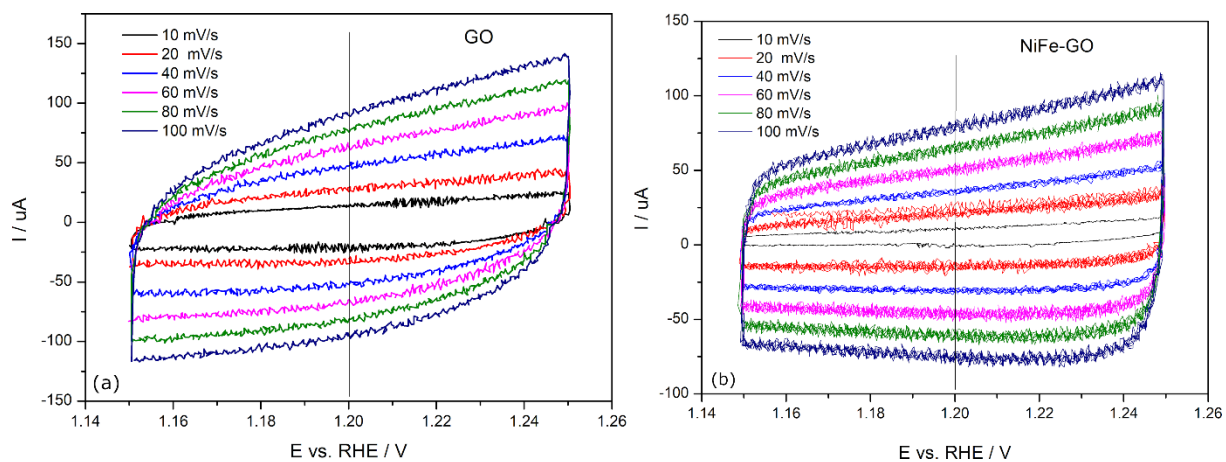


Figure S5: The example of cyclic voltammograms recorded during sweeping the potential from 1.15 to 1.25 V vs RHE with a scan rate of 10, 20, 40, 60, 80, and 100 $\text{mV} \cdot \text{s}^{-1}$ in aqueous solution of 1 M KOH for GO (a) and NiFe-GO (b). Similar graphs were obtained for the rest of the studied samples.