

Supporting Information

for

Growth and structural discrimination of cortical neurons on randomly oriented and vertically aligned dense carbon nanotube networks

Christoph Nick^{1,‡}, Sandeep Yadav^{2,‡}, Ravi Joshi², Christiane Thielemann^{*1} and Jörg J. Schneider^{*2}

Address: ¹University of Applied Sciences Aschaffenburg, Department of Engineering, BioMEMS lab, Würzburger Strasse 45, 64743 Aschaffenburg, Germany and ²Technische Universität Darmstadt, Fachbereich Chemie, Eduard-Zintl-Institut für Anorganische und Physikalische Chemie, Alarich-Weiss-Str. 12, 64287 Darmstadt Germany

E-mail: Christiane Thielemann* - christiane.thielemann@h-ab.de;

Jörg J. Schneider* - joerg.schneider@ac.chemie.tu-darmstadt.de

* Corresponding author

‡ Equal contributors

Additional growth studies through SEM

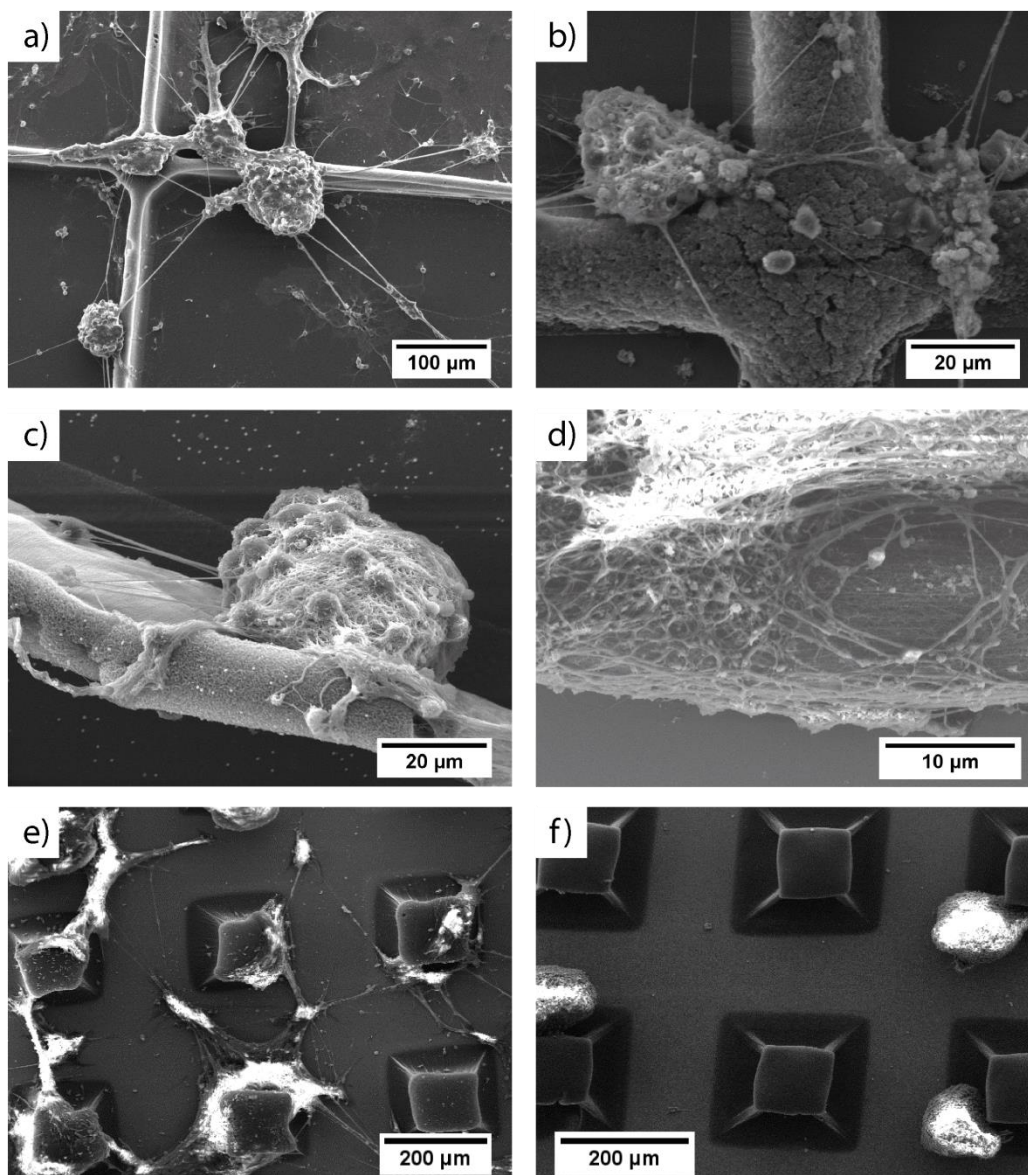


Figure S1: SEM pictures of neuronal cell assembly on different CNT micro architectures. Upper left a): neuronal cell assembly on a CNT cross bar structure. Upper right b): Magnified view of a neuronal cell adhesion on a cross bar CNT structure. Middle left c): Higher magnified view of a neuronal cell cluster showing its preferential adhesion on the side architecture of the CNT wall structure. Middle right d): higher magnified view of a dense cell assembly on the CNT upper rim wall structure shown in c). Lower left e): Example exemplifying a comparable preferential cell assembly of the neuron cell line R18 (Embryonic Rat Hypothalamus Cell Line R18 (RHypoE-18)) on the CNT side walls as compared to a) or c). Lower right f): Example showing the preferential cell assembly of a neuronal spheroid (from neurons of a chicken embryo) on the CNT side walls of CNT microstructured blocks.