

Supporting Information

for

Fluorination of vertically aligned carbon nanotubes: from CF₄ plasma chemistry to surface functionalization

Claudia Struzzi^{1*}, Mattia Scardamaglia¹, Jean-François Colomer², Alberto Verdini³, Luca Floreano³, Rony Snyders^{1,4} and Carla Bittencourt¹

Address: ¹Chimie des Interactions Plasma-Surface, CIRMAP, University of Mons, 7000 Mons, Belgium, ²Research Group on Carbon Nanostructures (CARBONNAGE), University of Namur, 5000 Namur, Belgium, ³CNR-IOM, Laboratorio Nazionale TASC, I-34149 Trieste, Italy and ⁴Materia Nova Research Center, 7000 Mons, Belgium

Email: Claudia Struzzi - claudia.struzzi@umons.ac.be

* Corresponding author

Additional experimental data

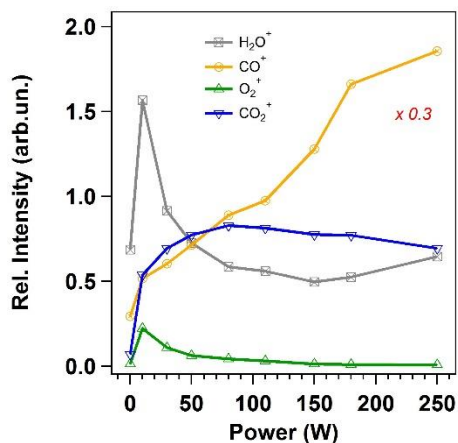


Figure S1: Evolution of the normalized ion signals extracted from the mass spectra at different plasma power (using 10 mTorr and 10 sccm). The masses under study are relative to the following ionized molecules: H₂O ($m/z = 18$), CO ($m/z = 28$), O₂ ($m/z = 32$), and CO₂ ($m/z = 44$).

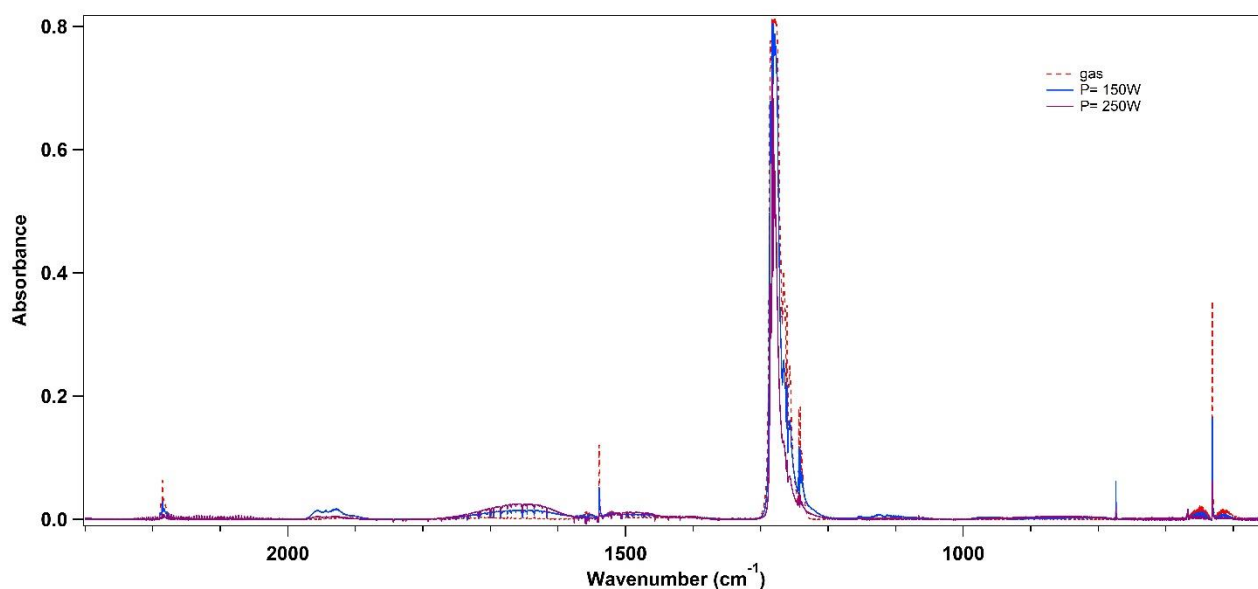


Figure S2: FTIR spectra acquired during pure CF₄ gas phase (dotted line) and during CF₄ plasma ignited at two different power values (150 and 250 W), using 10 mTorr and 10 sccm.

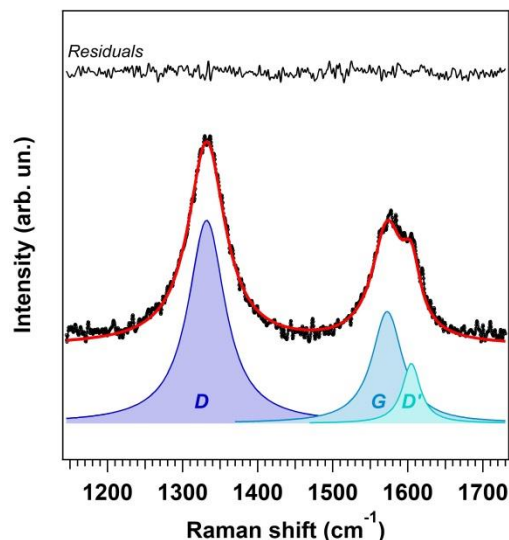


Figure S3: Representative curve fitting (red line) of Raman data (black dotted symbols) acquired from fluorinated vCNT using $P = 30$ W. Three Lorentzian components are individuated and used (D, G and D'). On top of the graph, residuals are shown.

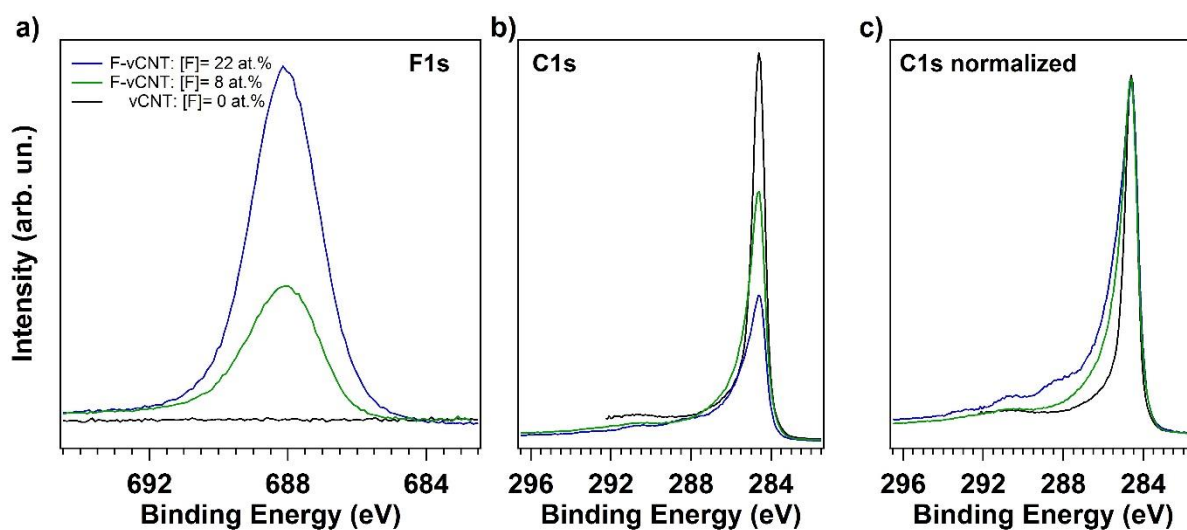


Figure S4: XPS spectra are acquired at a grazing incidence angle of 4° from the sample surface plane to enhance the surface sensitivity. The photon energy is 810 eV. a) F1s and b) C1s core level spectra acquired from pristine, and from two fluorinated vCNT containing different fluorine amount on the surface (8 atom % and 22 atom %). c) C1s normalized spectra are shown for the three samples for easy comparison of their line-shape.

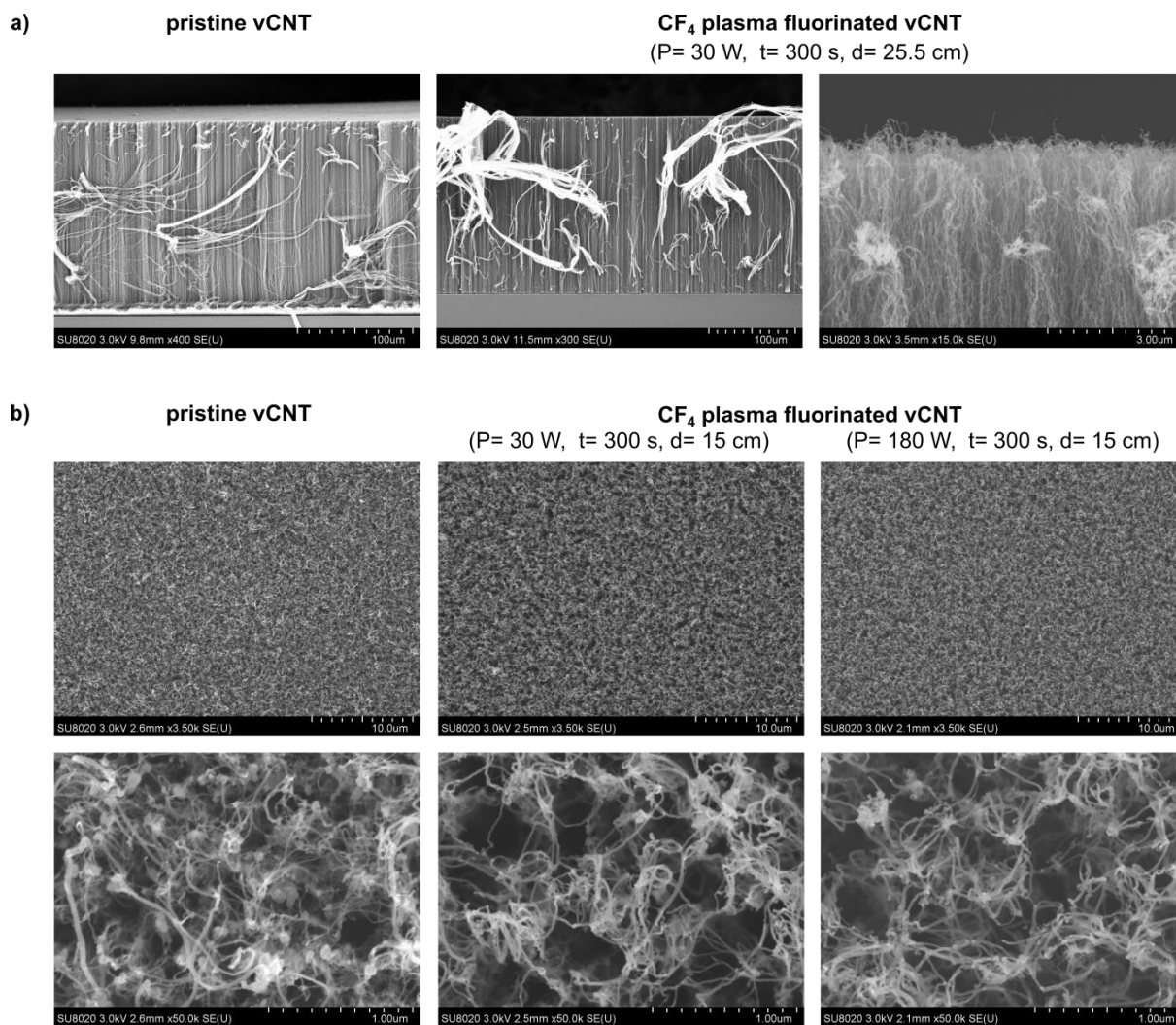


Figure S5: SEM images are acquired on pristine vCNT and on CF₄ plasma fluorinated vCNT. Side and top views are shown in (a) and in (b), respectively.

Table S1: The functionalization parameters are specified for the four samples used to test ageing effect shown in Figure 6 of the manuscript.

	<i>P</i> (W)	<i>t</i> (s)	<i>d</i> (cm)
<i>sample 1</i>	30	120	39
<i>sample 2</i>	30	300	15
<i>sample 3</i>	180	300	15
<i>sample 4</i>	110	300	15