

# **Supporting Information**

for

## **Nanoscale electrochemical response of lithium-ion cathodes: a combined study using C-AFM and SIMS**

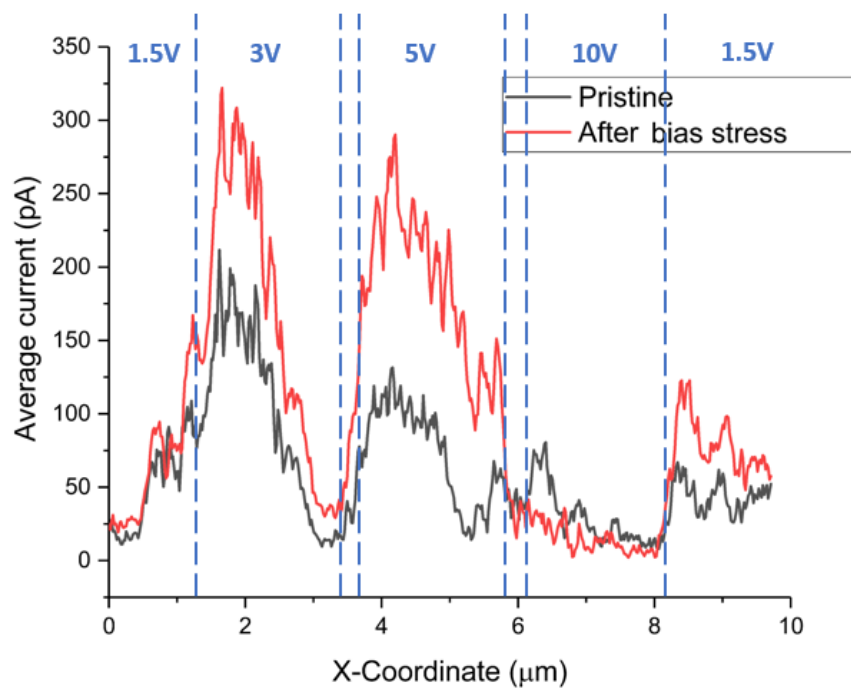
Jonathan Op de Beeck\*<sup>1,2</sup>, Nouha Labyedh<sup>1,3</sup>, Alfonso Sepúlveda<sup>1</sup>, Valentina Spampinato<sup>1</sup>, Alexis Franquet<sup>1</sup>, Thierry Conard<sup>1</sup>, Philippe M. Vereecken<sup>1,3</sup>, Wilfried Vandervorst<sup>1,2</sup> and Umberto Celano\*<sup>1</sup>

Address: <sup>1</sup>IMEC, Kapeldreef 75, 3001 Leuven, Belgium; <sup>2</sup>KU Leuven, Department of Physics and Astronomy, Celestijnenlaan 200D, B-3001 Leuven, Belgium and <sup>3</sup>KU Leuven, Department of Microbial and Molecular Systems, Celestijnenlaan 200D, B-3001 Leuven, Belgium

Email: Jonathan Op de Beeck\* - jonathan.opdebeeck@imec.be; Umberto Celano\* - celano@imec.be

\*Corresponding author

### **Additional experimental data**



**Figure S1:** One-dimensional current profile (averaged over width  $y \approx 1.5 \mu\text{m}$ ) showing the influence of multiple bias stress on electrodeposited LMO (cf. Figure 1b,f of the main manuscript).