

# **Supporting Information**

for

## **Direct AFM-based nanoscale mapping and tomography of open-circuit voltages for photovoltaics**

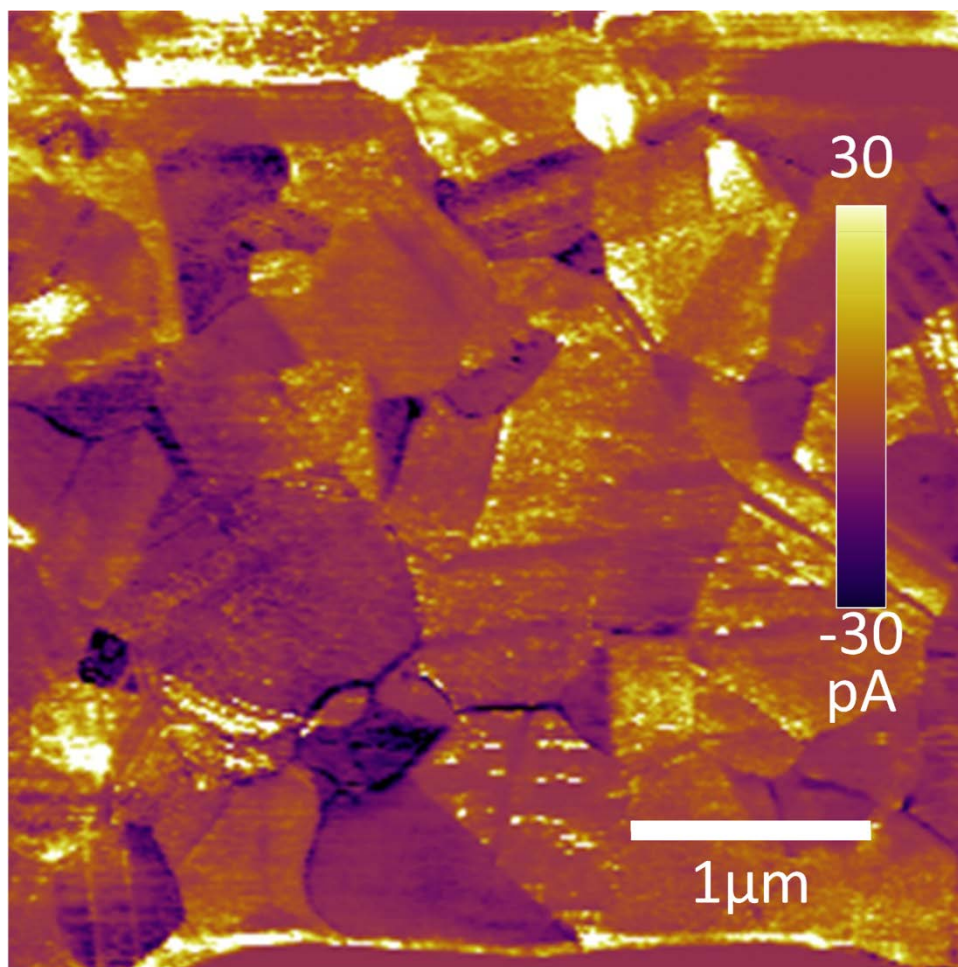
Katherine Atamanuk, Justin Luria and Bryan D. Huey\*

Address: University of Connecticut, Dept. of Materials Science and Engineering, Storrs, Connecticut 06269, USA

Email: Bryan D. Huey\* - [bryan.huey@uconn.edu](mailto:bryan.huey@uconn.edu)

\* Corresponding author

**Additional experimental data**



**Figure S1:** Representative quasi- $V_{oc}^*$  image from the measured photocurrent upon illumination during an applied voltage fixed at 700 mV.