

Supporting Information
for
Single-crystalline FeCo nanoparticle-filled carbon
nanotubes: synthesis, structural characterization and
magnetic properties

Rasha Ghunaim^{*1,2,§}, Maik Scholz¹, Christine Damm¹, Bernd Rellinghaus¹, Rüdiger Klingeler^{3,4}, Bernd Büchner^{1,5}, Michael Mertig^{2,6} and Silke Hampel¹

Address: ¹Leibniz Institute for Solid State and Material Research Dresden, Helmholtzstrasse. 20, 01069 Dresden, Germany, ²Institute for Physical Chemistry, Technische Universität Dresden, 01062 Dresden, Germany, ³Kirchhoff Institute for Physics, Heidelberg University, Im Neuenheimer Feld 227, D-69120 Heidelberg, Germany, ⁴Center for Advanced Materials (CAM), Heidelberg University, Im Neuenheimer Feld 225, D-69120 Heidelberg, Germany, ⁵Institute for Solid State Physics, Technische Universität Dresden, 01062 Dresden, Germany and ⁶Kurt-Schwabe-Institut für Mess- und Sensortechnik e.V. Meinsberg, 04736 Waldheim, Germany

Email: Rasha Ghunaim - r.ghunaim@ifw-dresden.de

* Corresponding author

§ Tel: +49 (0) 351 4659 413

EDX Measurements

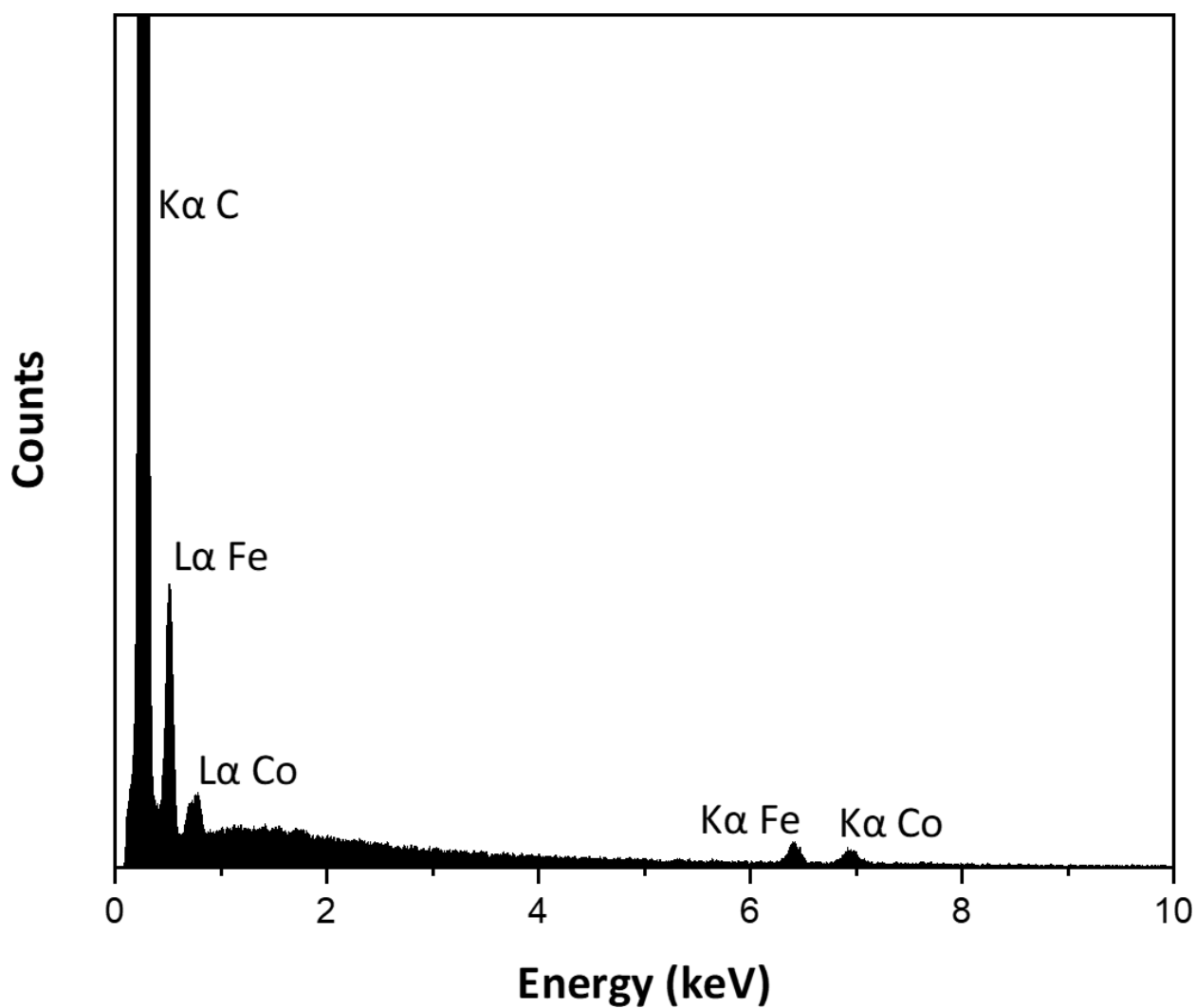


Figure S1: SEM-EDX quantitative measurement for the Fe/Co ratio over a selected area for an annealed sample of $\text{Fe}_{50}\text{Co}_{50}\text{@CNT}$, in which the ratio roughly corresponds to 1:1.