

Supporting Information
for
Orthogonal dual thiol–chloroacetyl and thiol–ene
couplings for the sequential one-pot assembly of
heteroglycoclusters

Michele Fiore¹, Gour Chand Daskhan¹, Baptiste Thomas¹ and Olivier Renaudet*^{1,2}

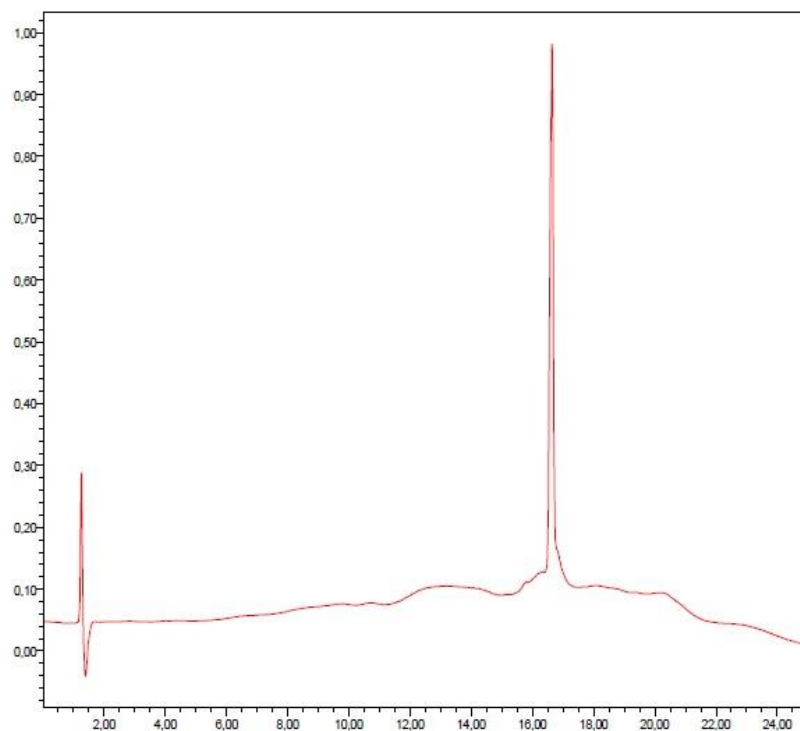
¹Département de Chimie Moléculaire, UMR-CNRS 5250 & ICMG FR2607, Université Joseph Fourier, PB 53, 38041 Grenoble Cedex 9, France and ²Institut Universitaire de France, 103 Boulevard Saint-Michel, 75005 Paris, France.

E-mail: Olivier Renaudet* - olivier.renaudet@ujf-grenoble.fr

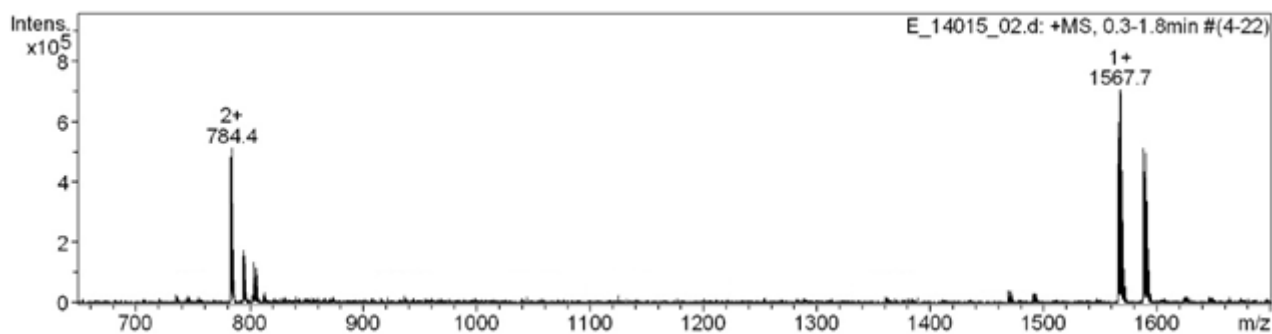
*Corresponding author

HPLC chromatograms and mass spectra of all compounds

Compound 3.

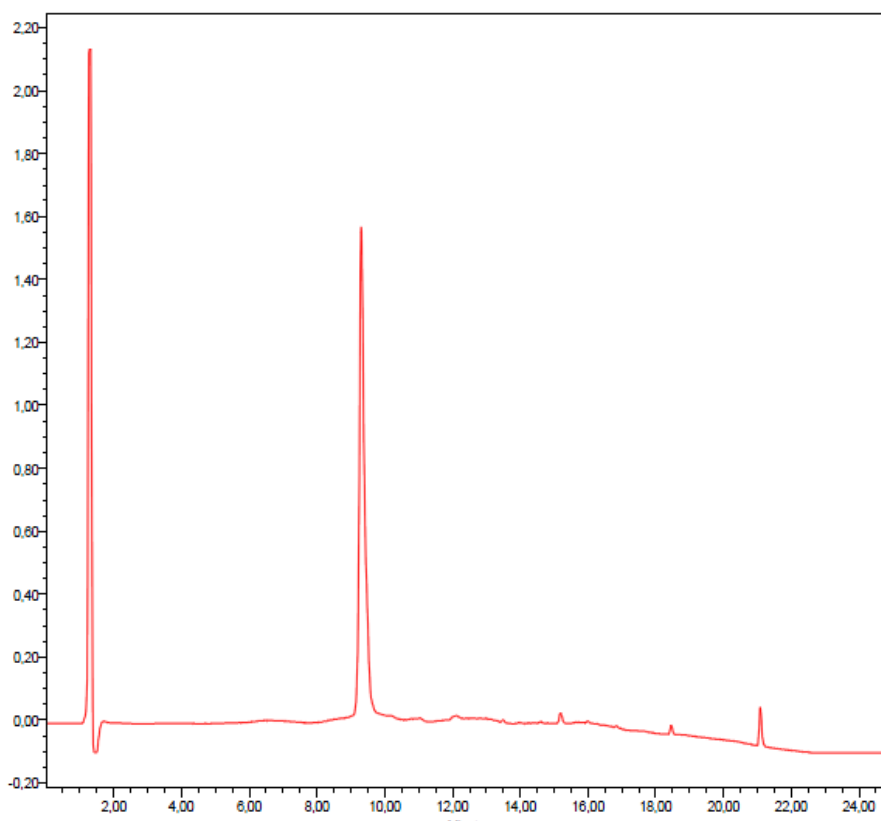


Analytical RP-HPLC: $t_R = 16.64$ min (gradient: 5 to 100% B in 20 min, $\lambda = 214$ nm).

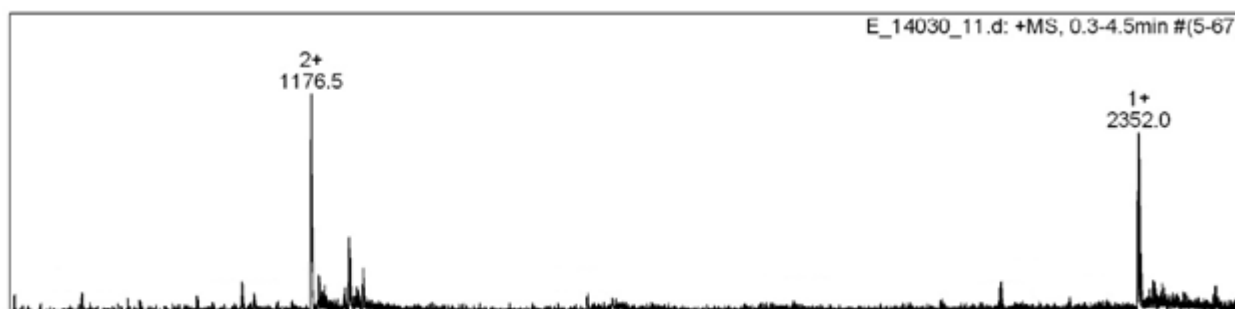


ESIMS⁺ (m/z): $[M + H]^+$ calcd for $C_{70}H_{111}Cl_2N_{16}O_{20}$, 1567.7; found, 1567.7.

Compound 4.

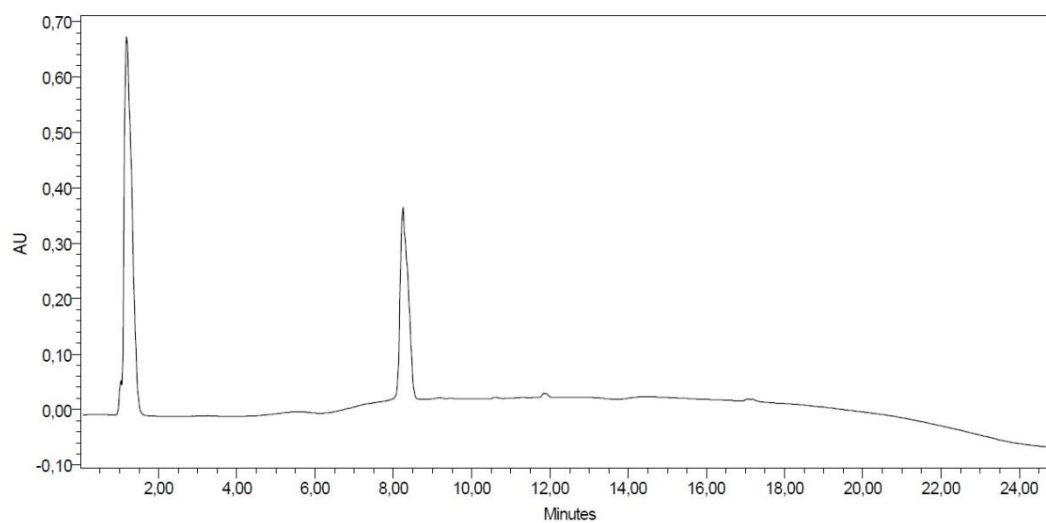


Analytical RP-HPLC: $t_R = 9.71$ (gradient: 5 to 100% B in 20 min, $\lambda = 214$ nm).



ESIMS⁺ (m/z): $[M + H]^+$ calcd. for $C_{94}Cl_2H_{159}N_{16}O_{40}S_4$, 2351.9; found, 2352.0.

Compound 5.

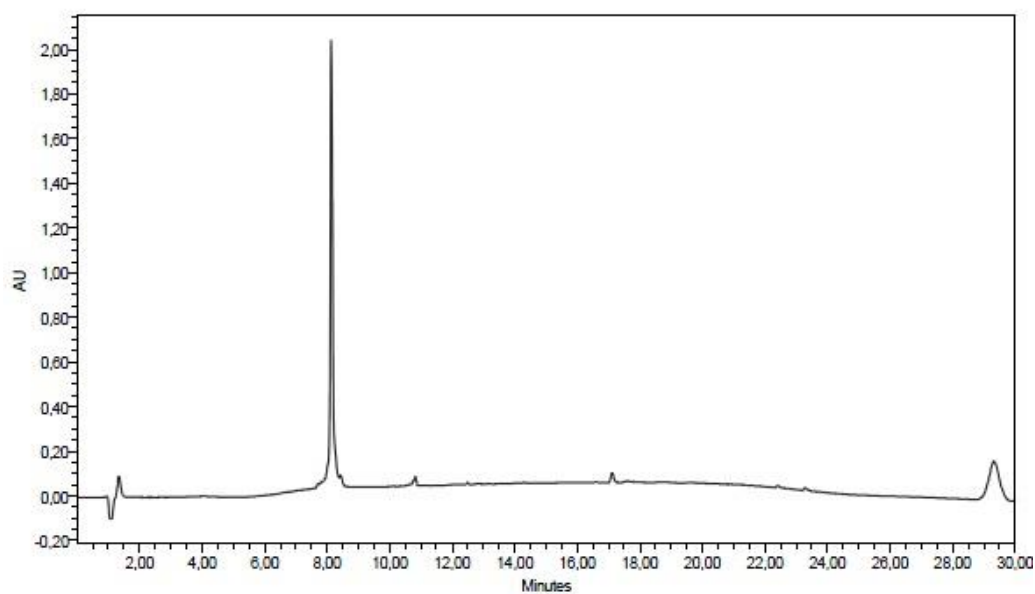


RP-HPLC: $t_R = 8.24$ (gradient: 5 to 100% B in 20 min, $\lambda = 214$ nm).

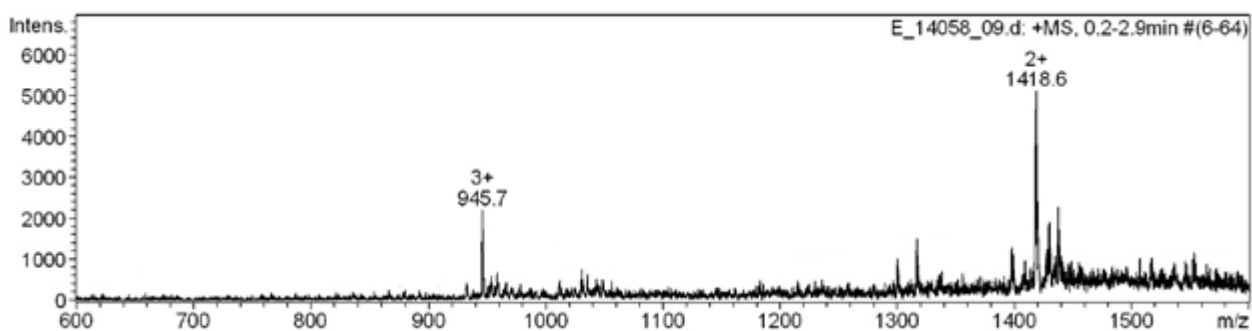


ESIMS⁺ (m/z): $[M + H]^+$ calcd for $C_{110}H_{187}N_{18}O_{50}S_6$, 2753.1; found, 2753.2.

Compound 8.

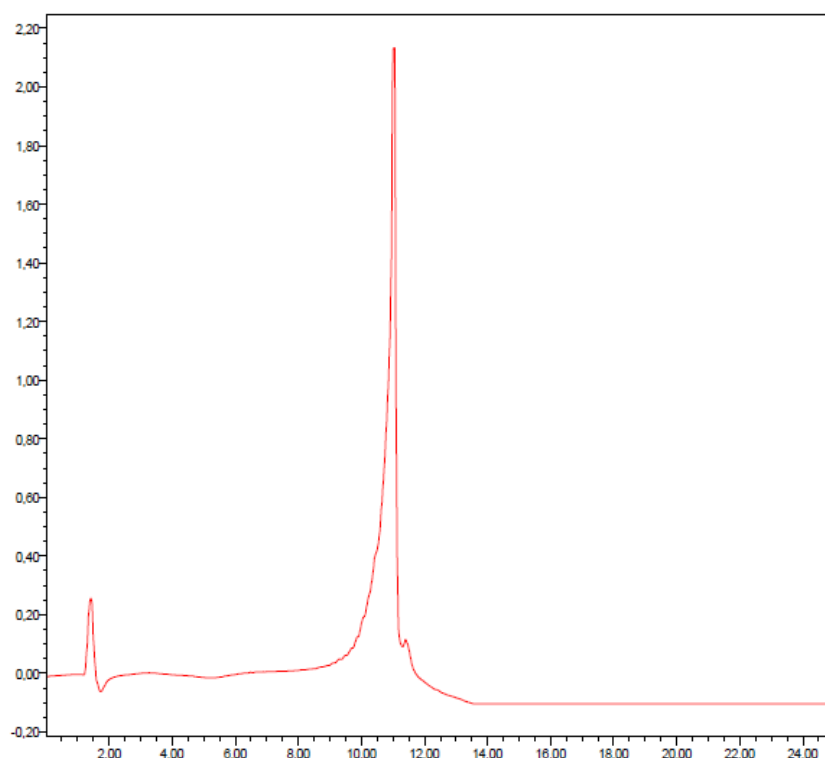


Analytical RP-HPLC: $t_R = 8.35$ min (gradient: 5 to 100% B in 20 min, $\lambda = 214$ nm).

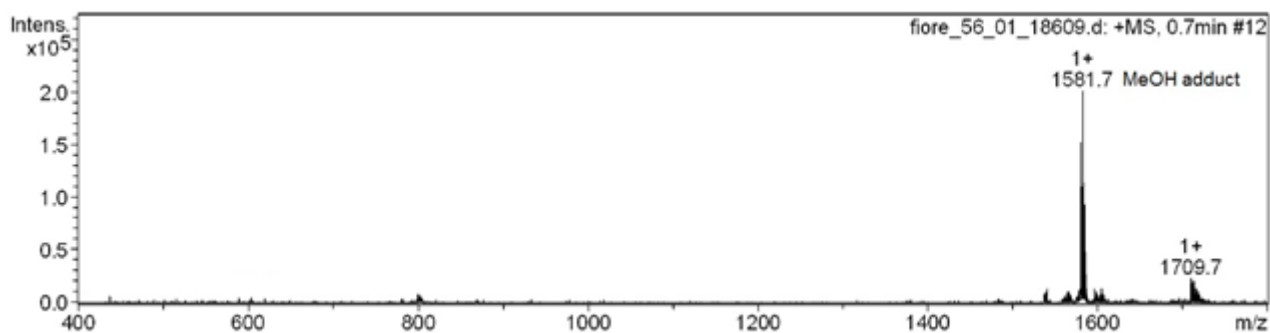


ESIMS⁺ (m/z): $[M + H]^+$ calcd for $C_{114}H_{193}N_{20}O_{50}S_6$, 2835.8; found, 2836.0.

Compound 9.

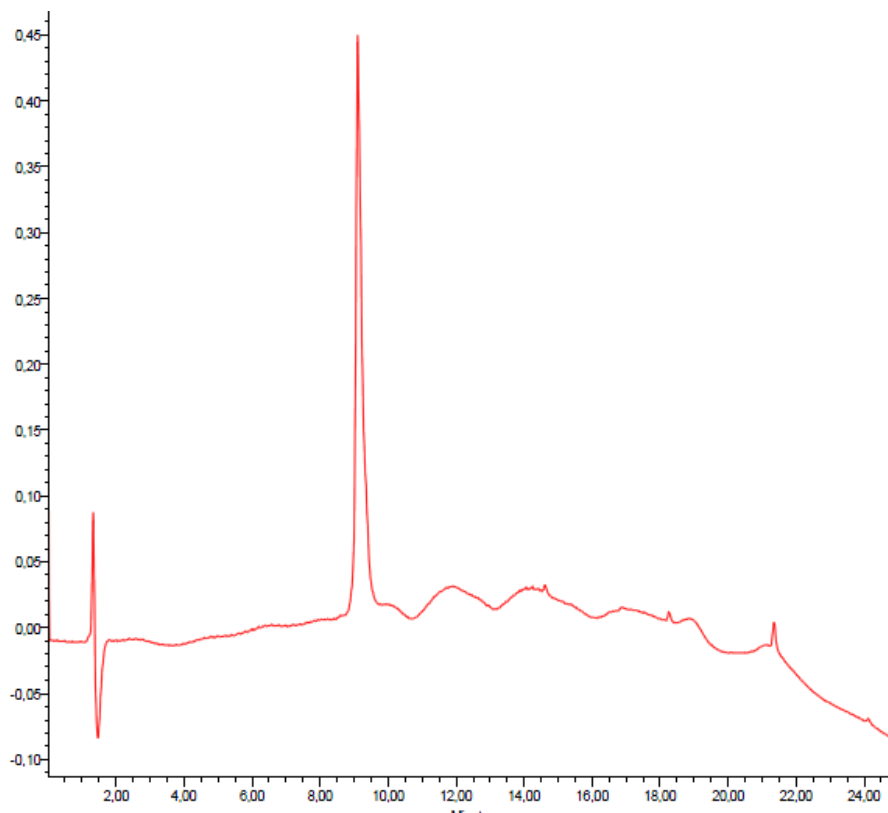


Analytical RP-HPLC: $t_R = 11.67$ min (gradient: 5 to 100% B in 20 min, $\lambda = 214$ nm).

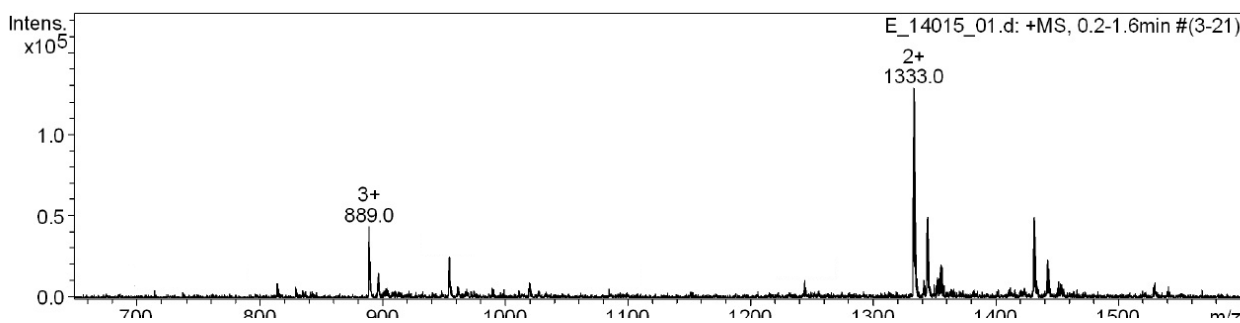


ESIMS⁺ (m/z): $[M + \text{MeOH}]^+$ calcd for $\text{C}_{66}\text{H}_{105}\text{Cl}_4\text{N}_{16}\text{O}_{18}$, 1582.7; found, 1582.0.

Compound 11.

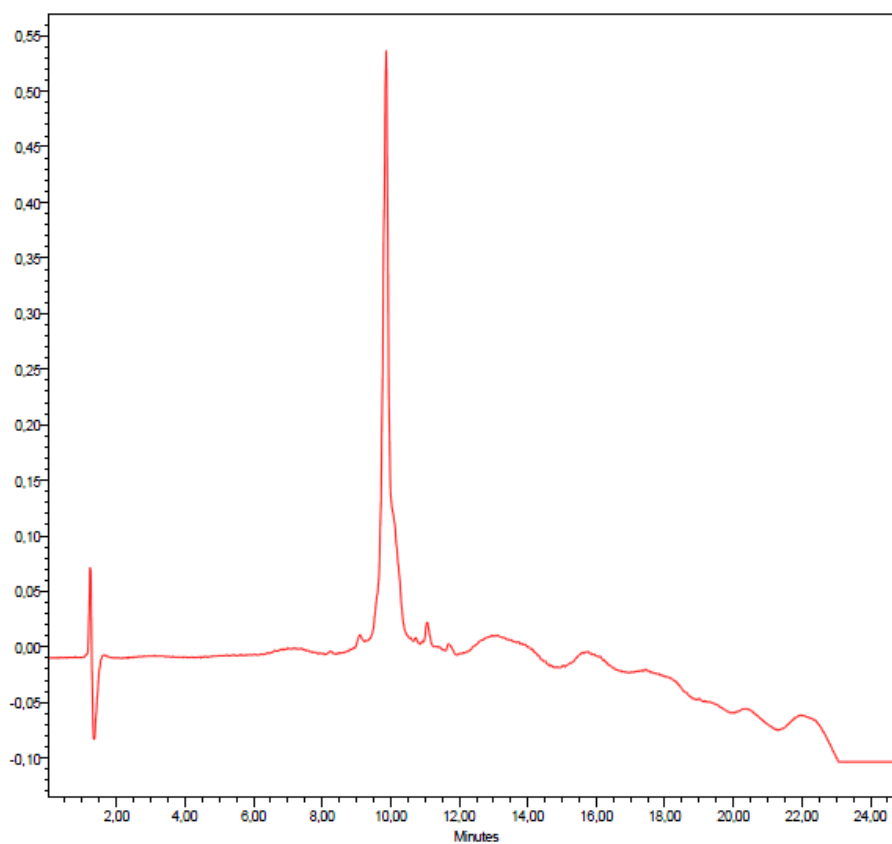


Analytical RP-HPLC: $t_R = 8.06$ min (gradient: 5 to 100% B in 20 min, $\lambda = 214$ nm).



ESIMS⁺ (m/z): $[M + H]^+$ calcd for $C_{106}H_{180}N_{18}O_{48}S_6$, 2666.1; found, 2666.1.

Compound 13.



Analytical RP-HPLC: $t_R = 10.06$ min (gradient: 5 to 100% B in 20 min, $\lambda = 214$ nm).



ESIMS⁺ (m/z): $[M + H]^+$ calcd for $C_{110}H_{184}N_{20}O_{48}S_6$, 2747.1; found, 2747.2.