

Supporting Information

for

Loose-fit polypseudorotaxanes constructed from γ -CDs and PHEMA-PPG-PEG-PPG-PHEMA

Tao Kong, Lin Ye, Ai-ying Zhang and Zeng-guo Feng*

Address: School of Materials Science and Engineering, Beijing Institute of Technology,
Beijing 100081, China

Email: Zeng-guo Feng - sainfeng@bit.edu.cn

*Corresponding author

Additional GPC trace and ^1H NMR spectral data

Content:

- GPC trace of PEP26M.
- ^1H NMR spectrum of PEP26M.
- ^1H NMR spectrum of BrPEPBr.

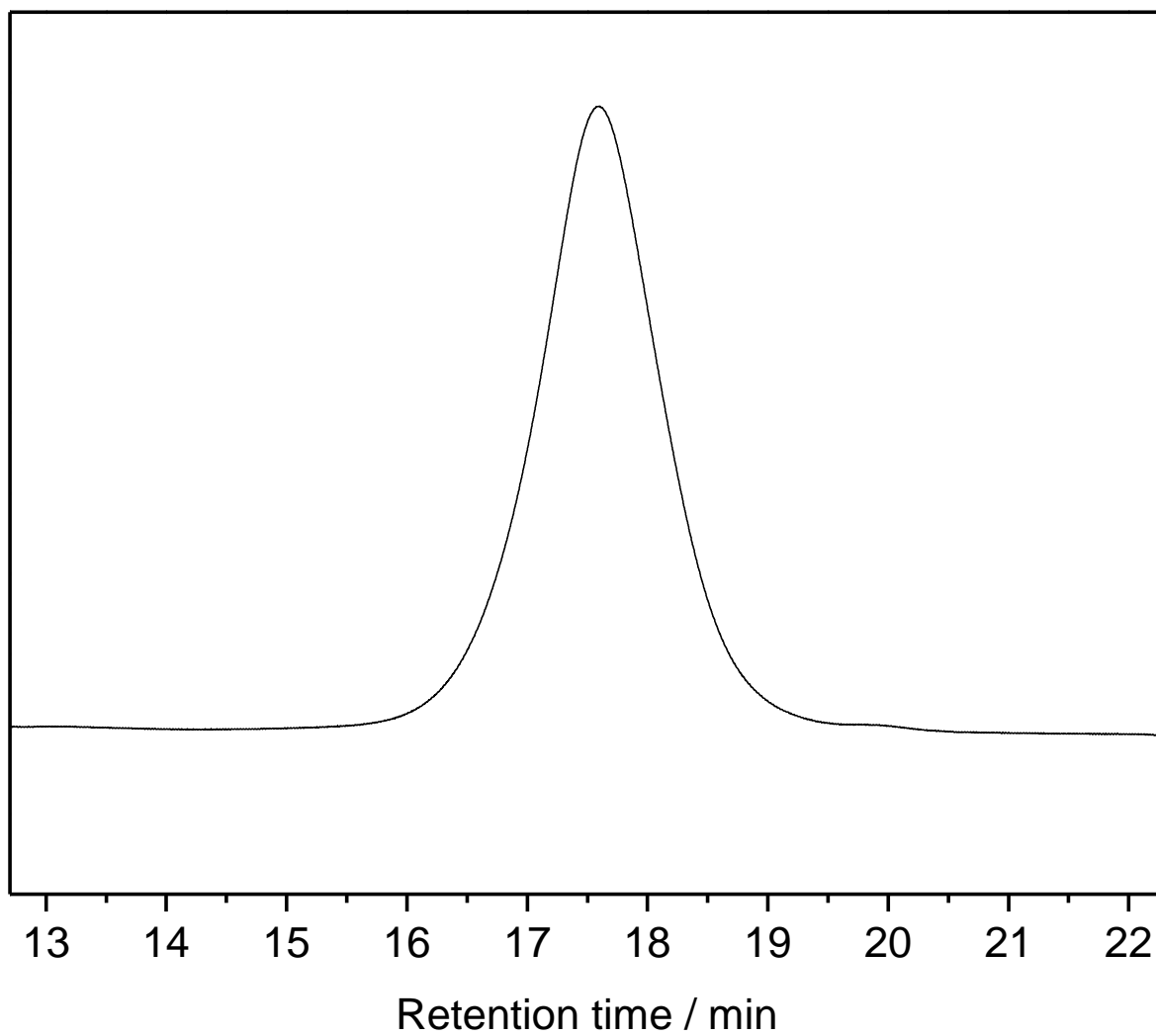


Figure S 1: GPC trace of PEP26M.

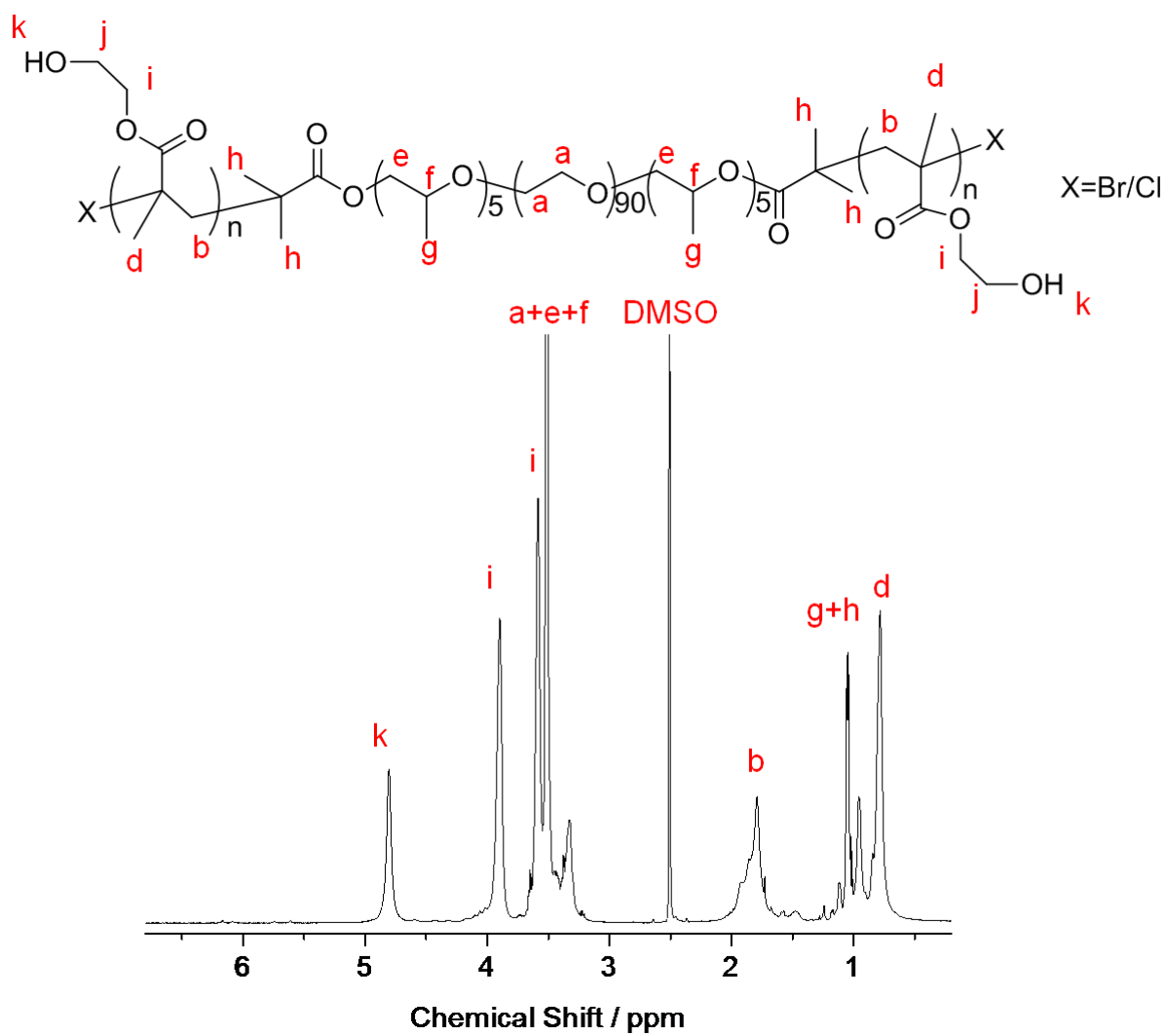


Figure S 2: ^1H NMR spectrum of PEP26M.

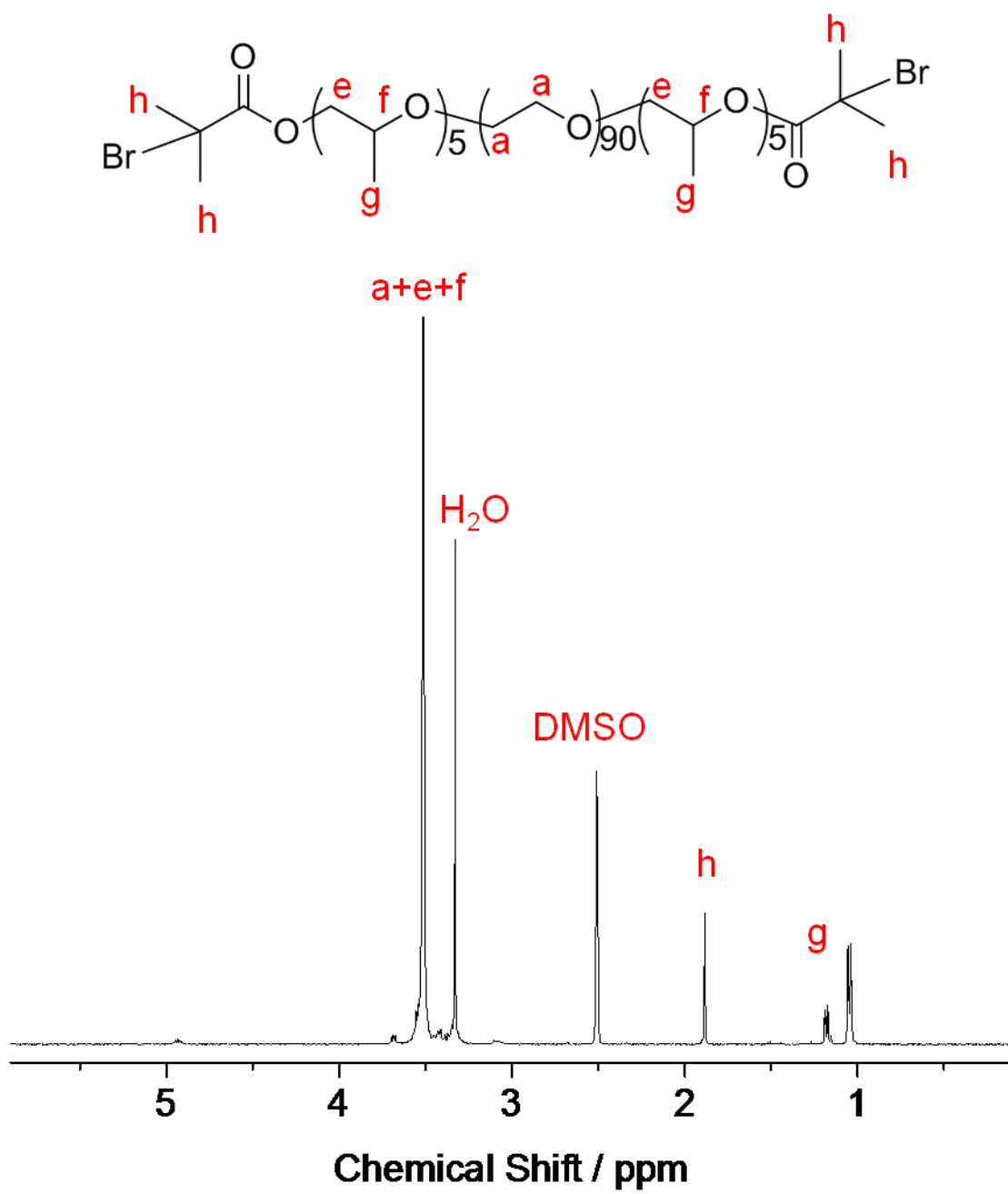


Figure S 3: ¹H NMR spectrum of BrPEPBr.