

# Supporting Information

for

## Conformational analysis of 2,2-difluoroethylamine hydrochloride: double *gauche* effect

Josué M. Silla<sup>1</sup>, Claudimar J. Duarte<sup>2</sup>, Rodrigo A. Cormanich<sup>2</sup>, Roberto Rittner<sup>2</sup>,  
Matheus P. Freitas<sup>1,\*§</sup>

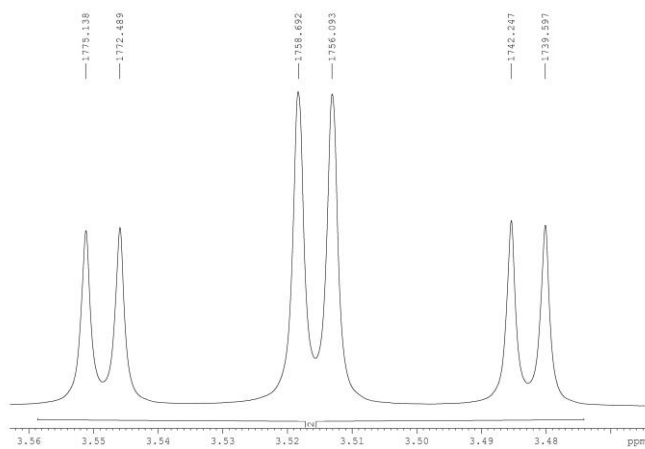
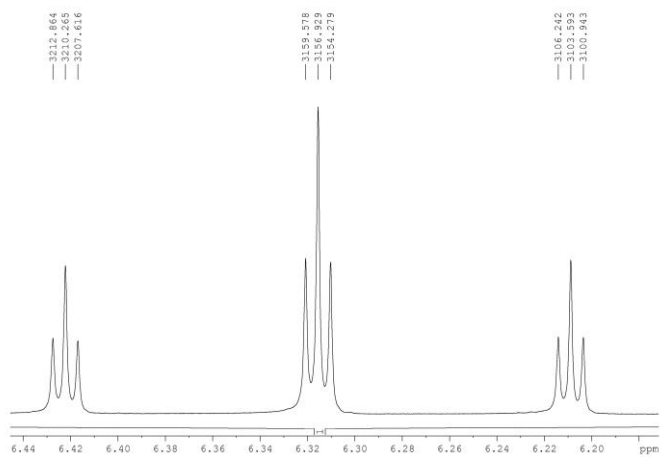
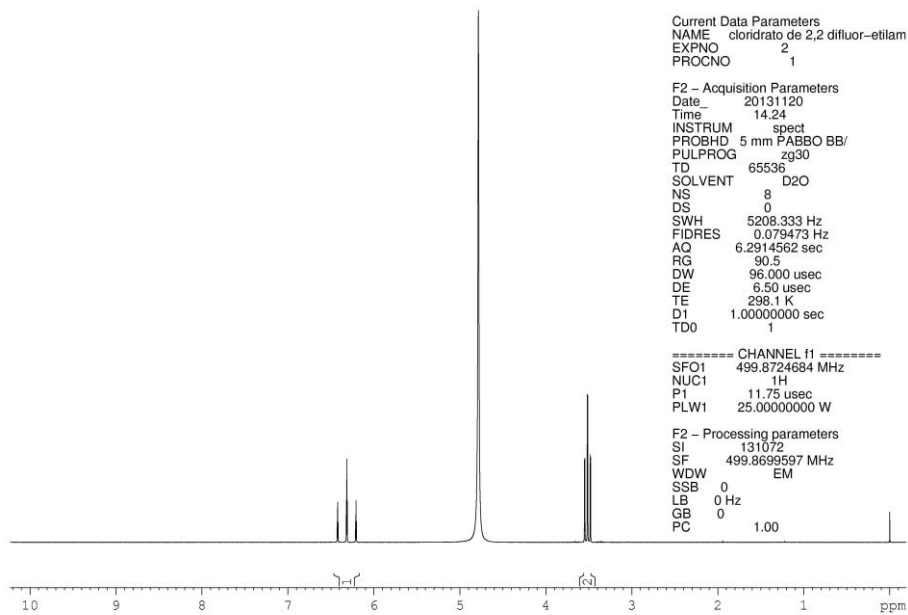
<sup>1</sup>Department of Chemistry, Federal University of Lavras, P. O. Box 3037, 37200-000,  
Lavras, MG, Brazil and <sup>2</sup>Chemistry Institute, State University of Campinas, P. O. Box  
6154, 13084-971, Campinas, SP, Brazil

Email: Matheus Puggina de Freitas\* - matheus@dqi.ufla.br

\*Corresponding author

§Tel.: +55 35 3829-1891; Fax: +55 35 3829-1271

### <sup>1</sup>H NMR spectrum of 2



**Figure S1.**  $^1\text{H}$  NMR spectrum of 2,2-difluoroethylamine hydrochloride in  $\text{D}_2\text{O}$  solution.