



## Supporting Information

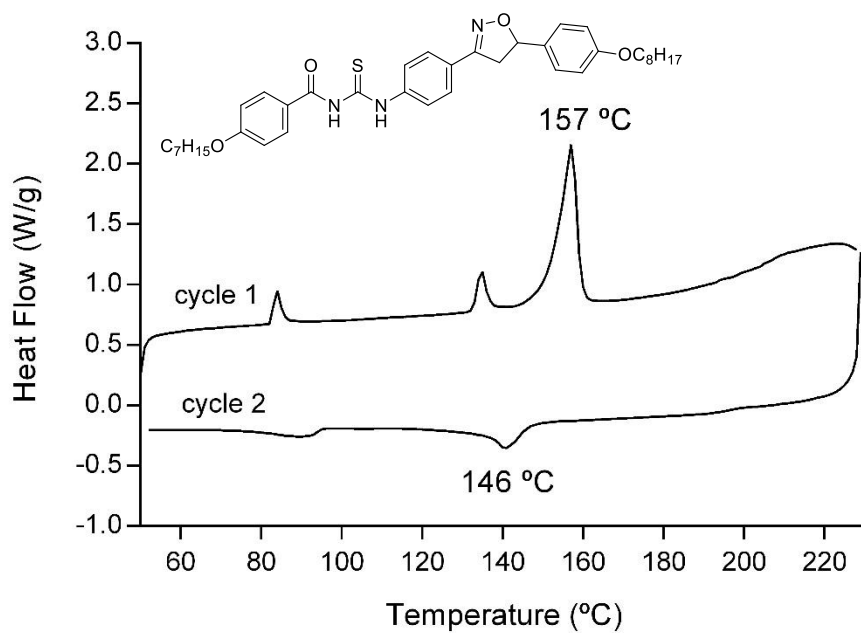
for

### **The use of isoxazoline and isoxazole scaffolding in the design of novel thiourea and amide liquid-crystalline compounds**

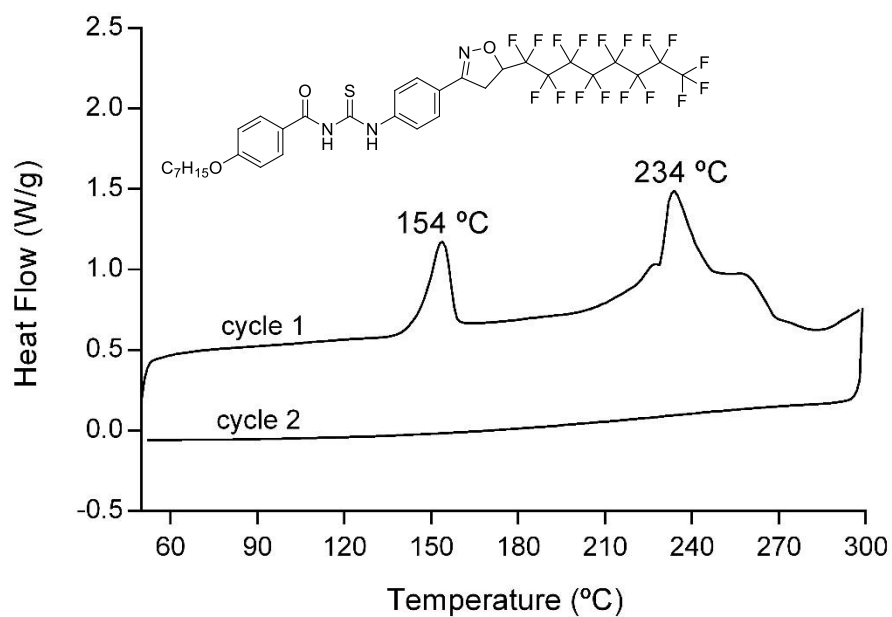
Itamar L. Gonçalves, Rafaela R. da Rosa, Vera L. Eifler-Lima and Aloir A. Merlo

*Beilstein J. Org. Chem.* **2020**, *16*, 175–184. [doi:10.3762/bjoc.16.20](https://doi.org/10.3762/bjoc.16.20)

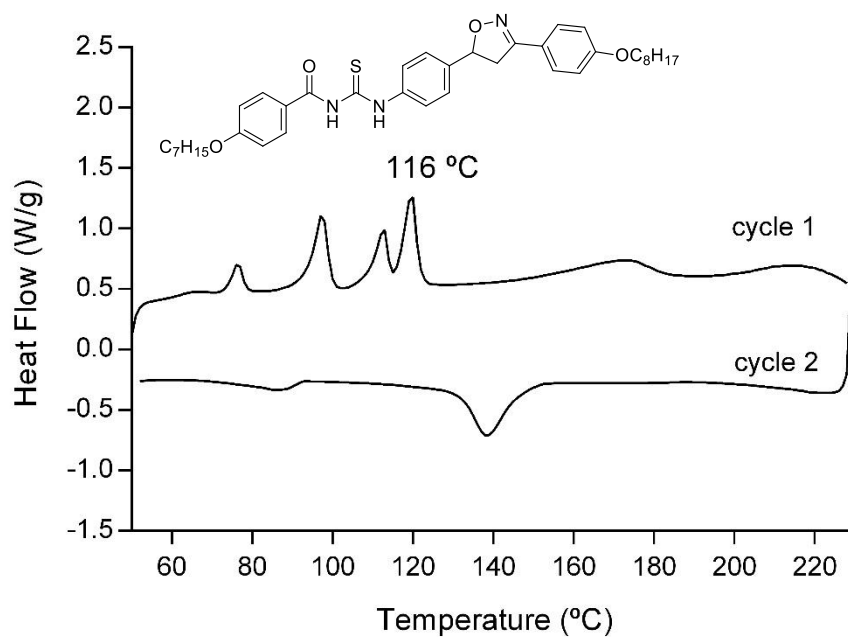
### **Differential scanning calorimetry plots of compounds**



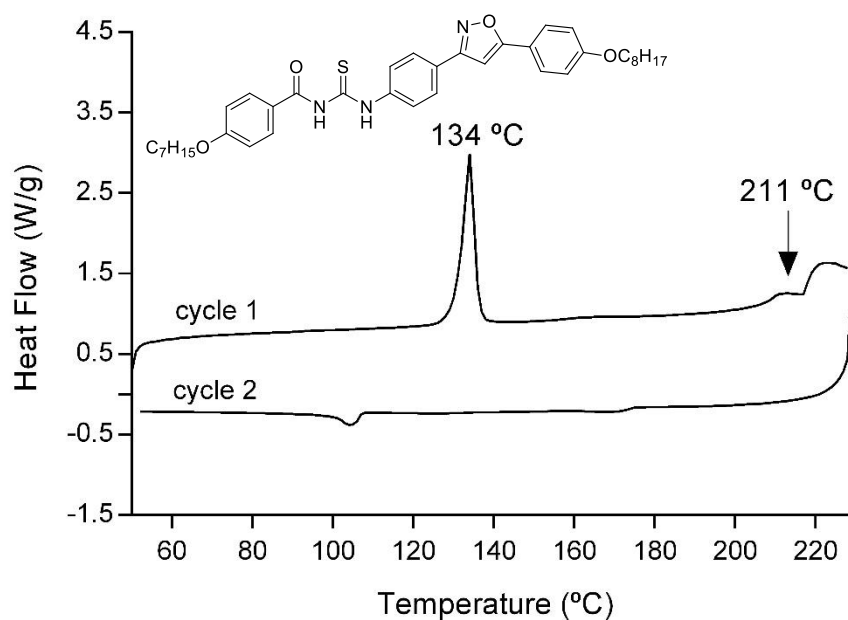
**Figure S1** - DSC curve for the thiourea **17a**, upon first heating and cooling cycle at a rate of  $10\text{ }^{\circ}\text{C}\cdot\text{min}^{-1}$ .



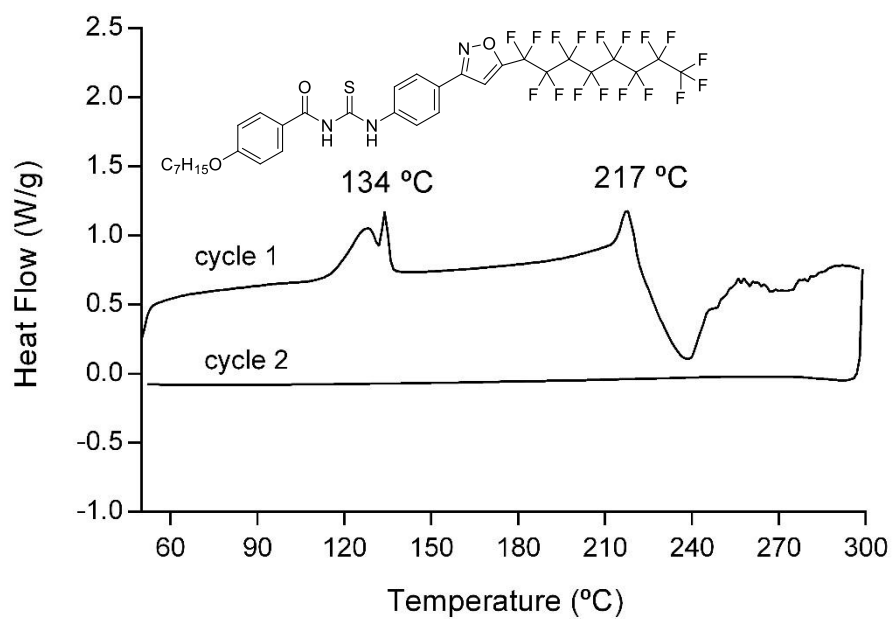
**Figure S2** - DSC curve for the thiourea **17b**, upon first heating and cooling cycle at a rate of  $10\text{ }^{\circ}\text{C}\cdot\text{min}^{-1}$ .



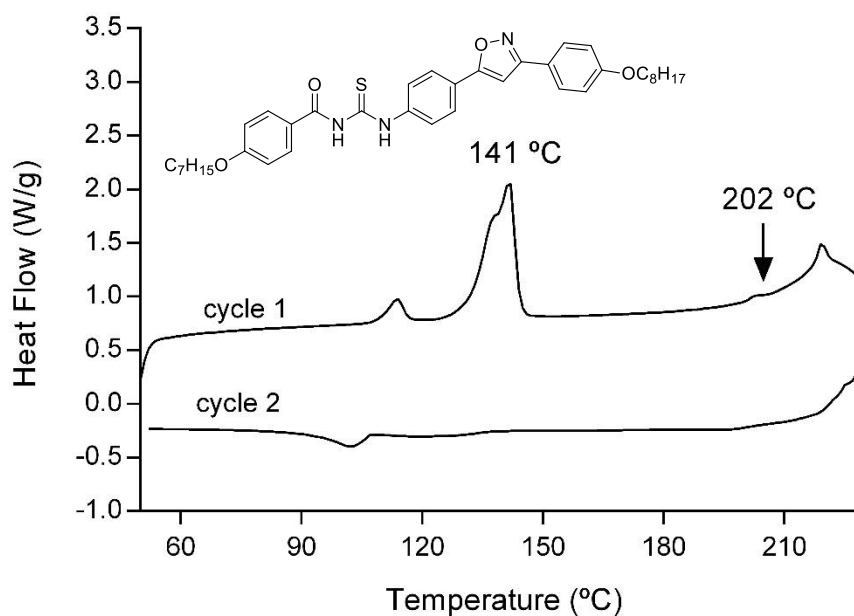
**Figure S3** - DSC curve for the thiourea **17c**, upon first heating and cooling cycle at a rate of  $10\text{ °C}\cdot\text{min}^{-1}$ .



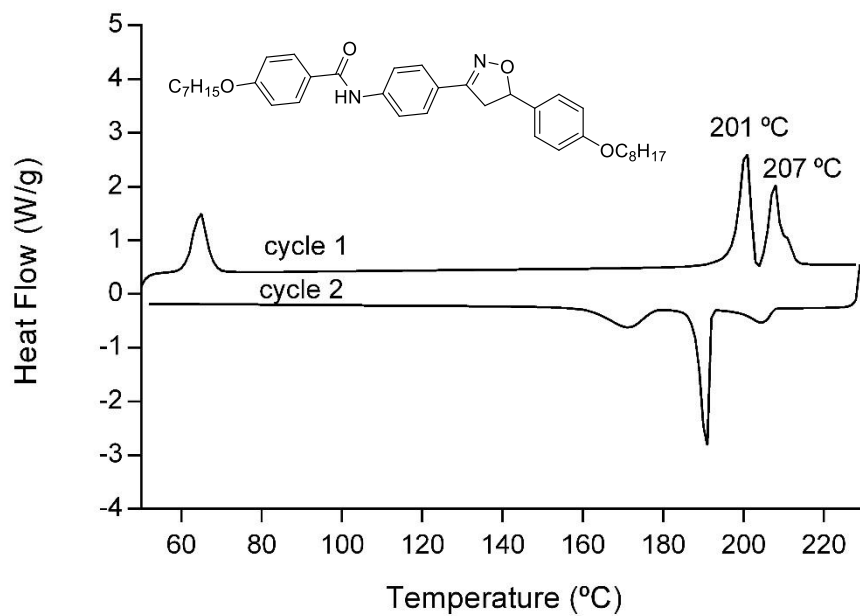
**Figure S4** - DSC curve for the thiourea **18a**, upon first heating and cooling cycle at a rate of  $10\text{ °C}\cdot\text{min}^{-1}$ .



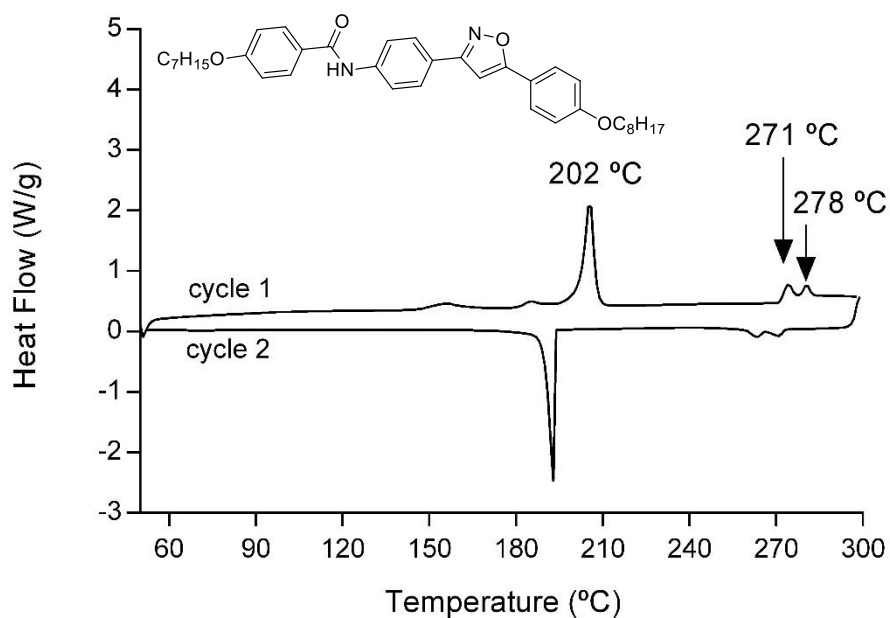
**Figure S5** - DSC curve for the thiourea **18b**, upon first heating and cooling cycle at a rate of  $10\text{ °C}\cdot\text{min}^{-1}$ .



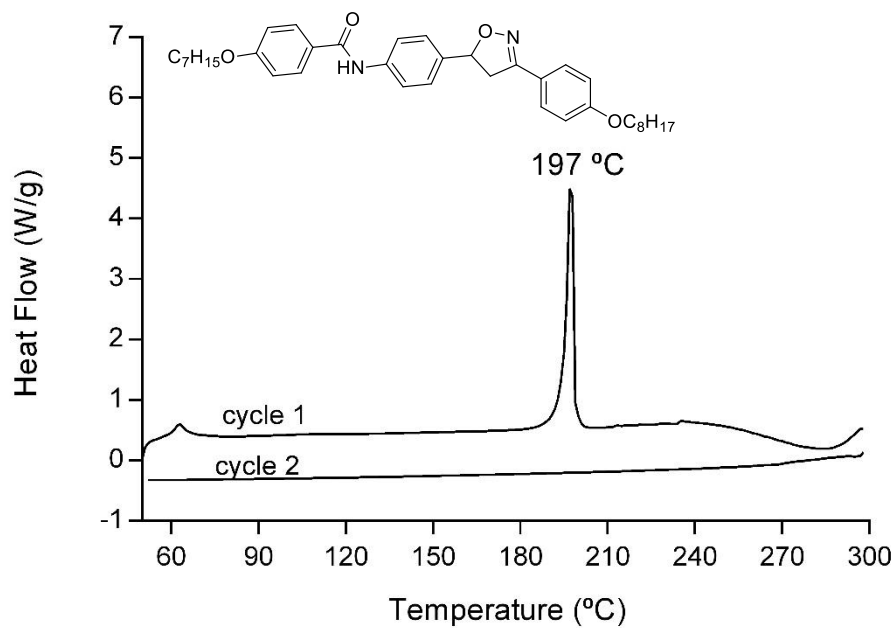
**Figure S6** - DSC curve for the thiourea **18c**, upon first heating and cooling cycle at a rate of  $10\text{ °C}\cdot\text{min}^{-1}$ .



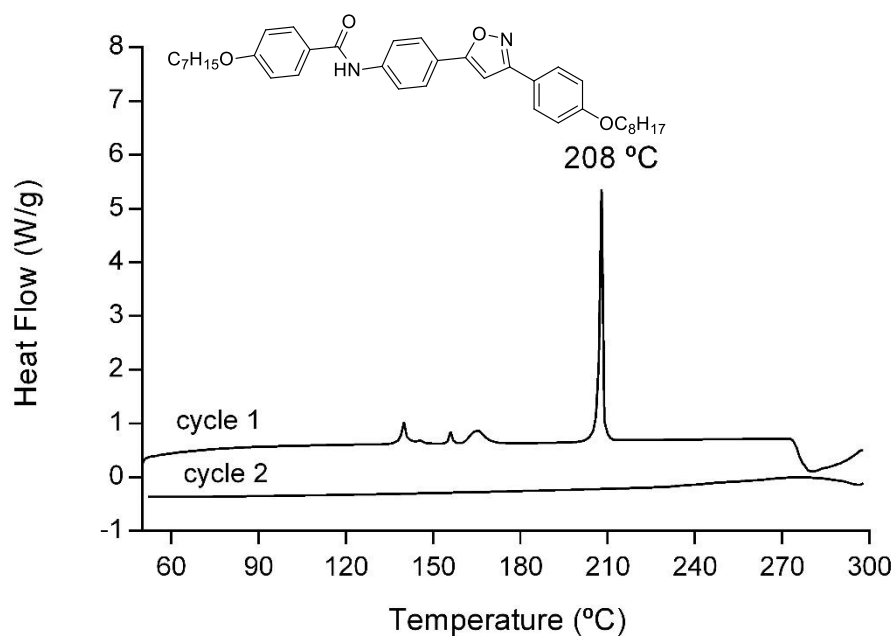
**Figure S7** - DSC curve for the amide **19**, upon first heating and cooling cycle at a rate of 10 °C·min<sup>-1</sup>.



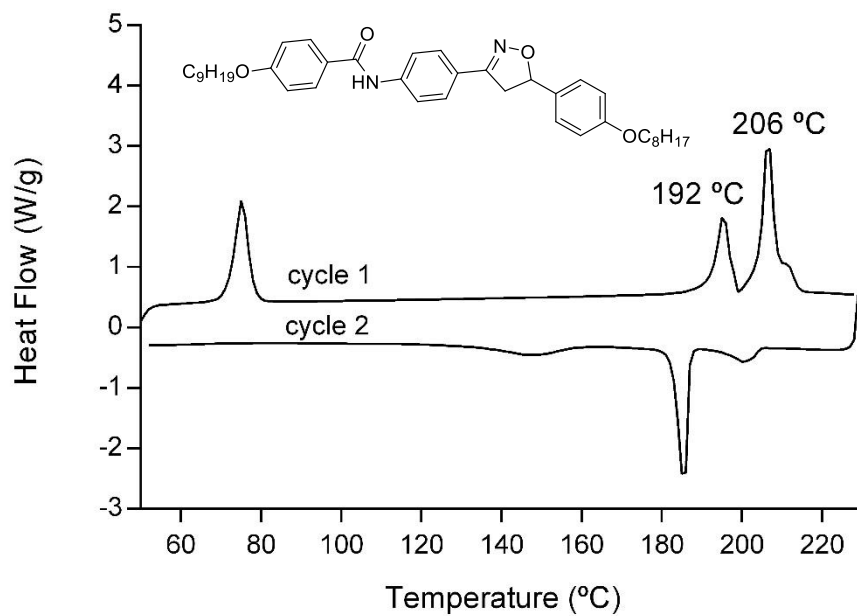
**Figure S8** - DSC curve for the amide **20**, upon first heating and cooling cycle at a rate of 10 °C·min<sup>-1</sup>.



**Figure S9** - DSC curve for the amide **21**, upon first heating and cooling cycle at a rate of  $10\text{ }^{\circ}\text{C}\cdot\text{min}^{-1}$ .



**Figure S10** - DSC curve for the amide **22**, upon first heating and cooling cycle at a rate of  $10\text{ }^{\circ}\text{C}\cdot\text{min}^{-1}$ .



**Figure S11** - DSC curve for the amide **24**, upon first heating and cooling cycle at a rate of  $10\text{ °C}\cdot\text{min}^{-1}$ .