



Supporting Information

for

Absolute configurations of talaromycones A and B, α -diversonolic ester, and aspergillusone B from endophytic *Talaromyces* sp. ECN211

Ken-ichi Nakashima, Junko Tomida, Takao Hirai, Yoshiaki Kawamura and Makoto Inoue

Beilstein J. Org. Chem. **2020**, *16*, 290–296. [doi:10.3762/bjoc.16.28](https://doi.org/10.3762/bjoc.16.28)

A phylogenetic tree for ECN211 and related species and NMR spectra of 1 and 2

Table of Contents

Figure S1: A phylogenetic tree for ECN211 and related species based on the D1/D2 domain of 26SrDNA sequences.

Figure S2: ^1H NMR spectrum (400 MHz, CDCl_3) of **1**

Figure S3: ^{13}C NMR and DEPT-135 spectra (100 MHz, CDCl_3) of **1**

Figure S4: HMQC spectrum (CDCl_3) of **1**

Figure S5: HMBC spectrum (CDCl_3) of **1**

Figure S6: ^1H NMR spectrum (400 MHz, CDCl_3) of **2**

Figure S7: ^{13}C NMR and DEPT-135 spectra (100 MHz, CDCl_3) of **2**

Figure S8: HMQC spectrum (CDCl_3) of **2**

Figure S9: HMBC spectrum (CDCl_3) of **2**

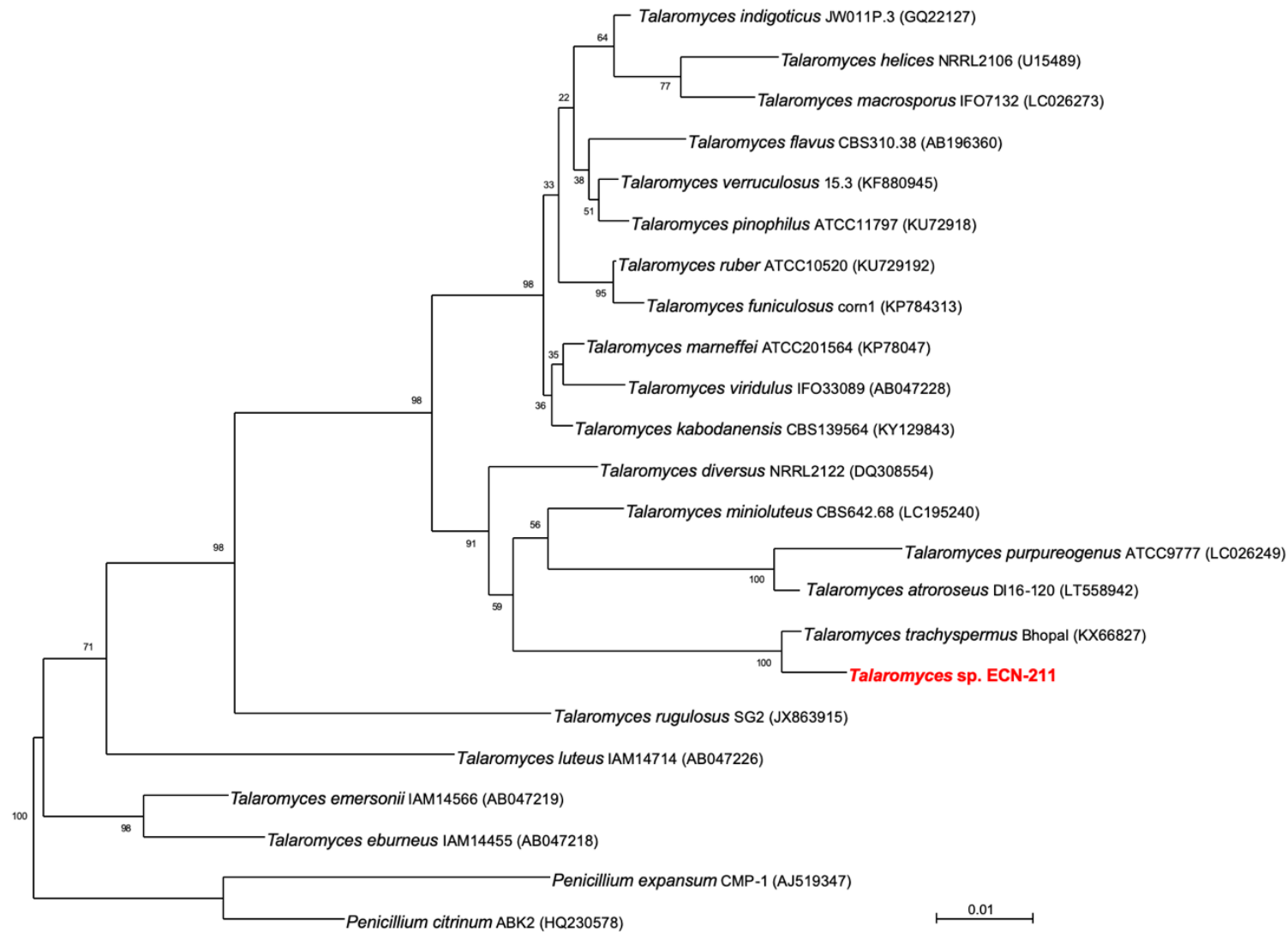


Figure S1: A phylogenetic tree for ECN211 and related species based on the D1/D2 domain of 26S rDNA sequences.

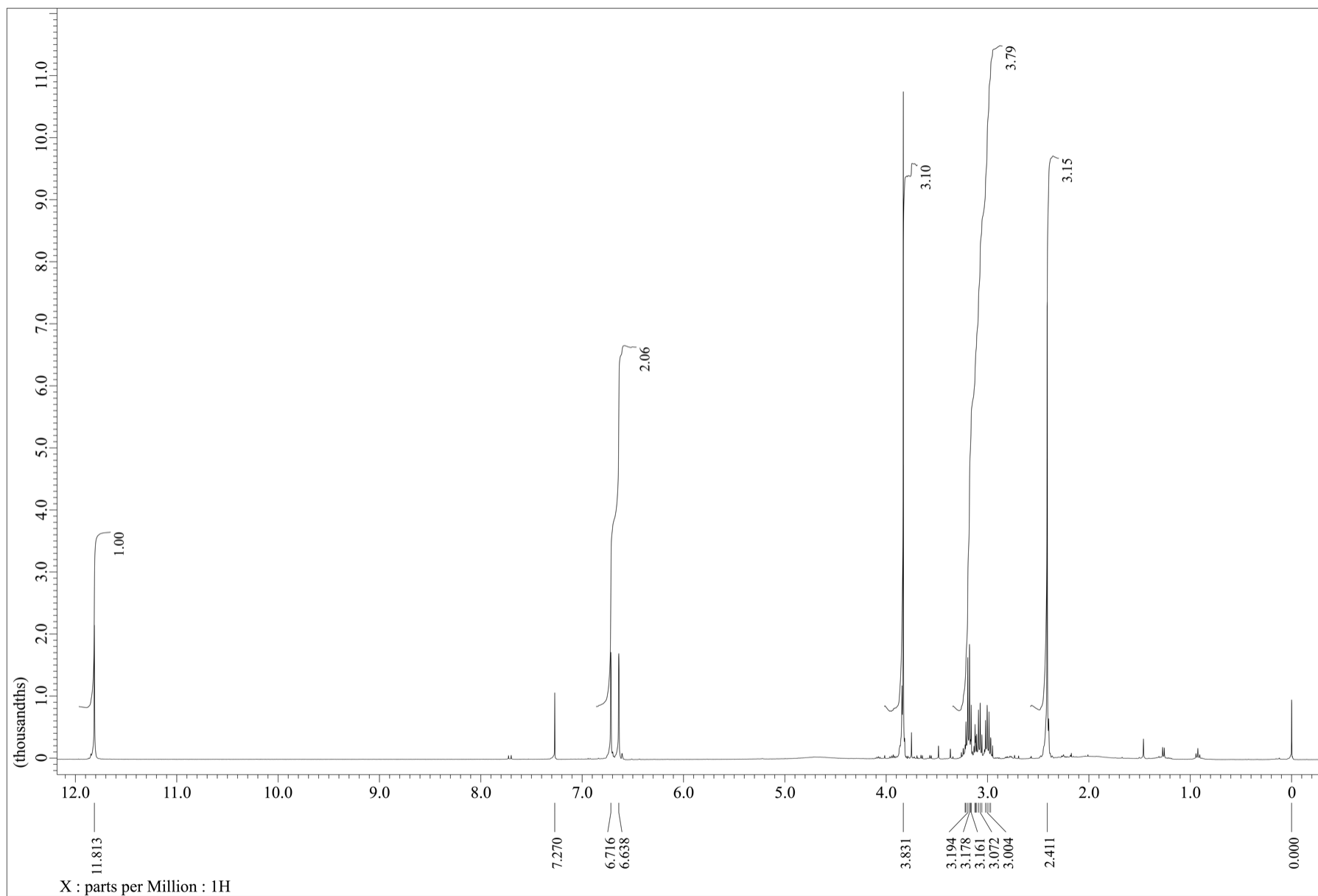


Figure S2: ¹H NMR spectrum (400 MHz, CDCl₃) of **1**.

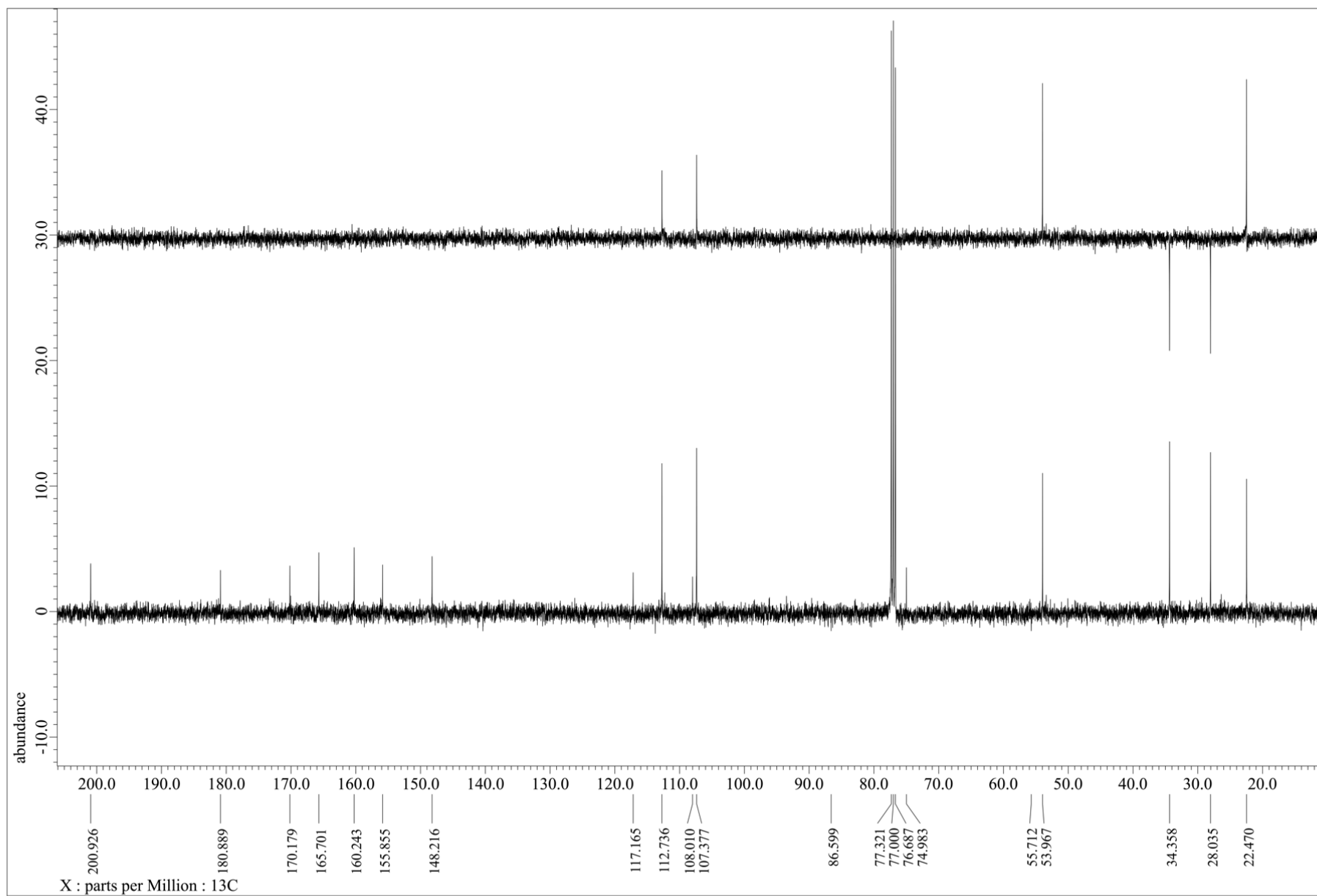


Figure S3: ^{13}C NMR and DEPT-135 spectra (100 MHz, CDCl_3) of **1**.

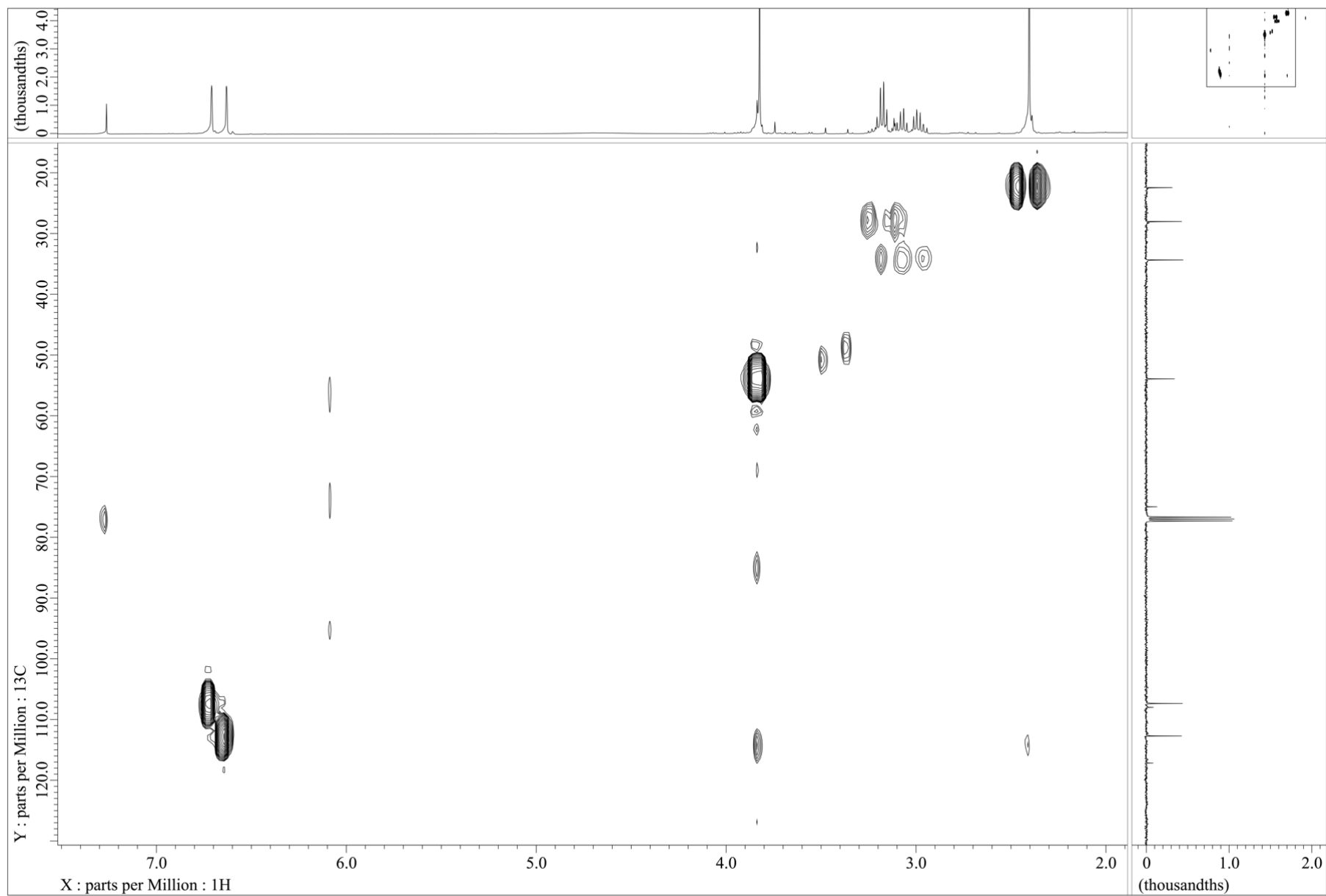


Figure S4: HMQC spectrum (CDCl_3) of **1**.

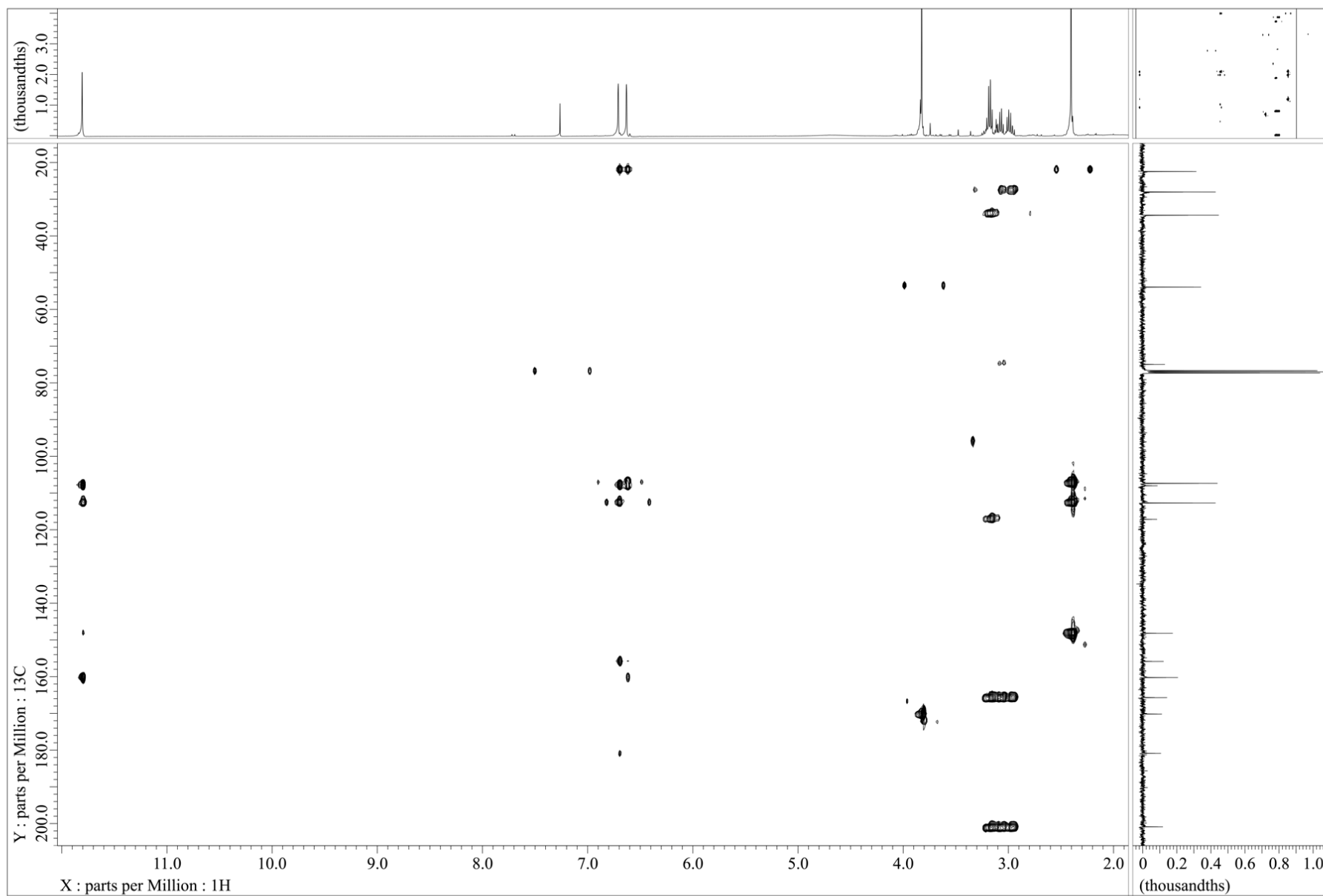


Figure S5: HMBC spectrum (CDCl_3) of **1**.

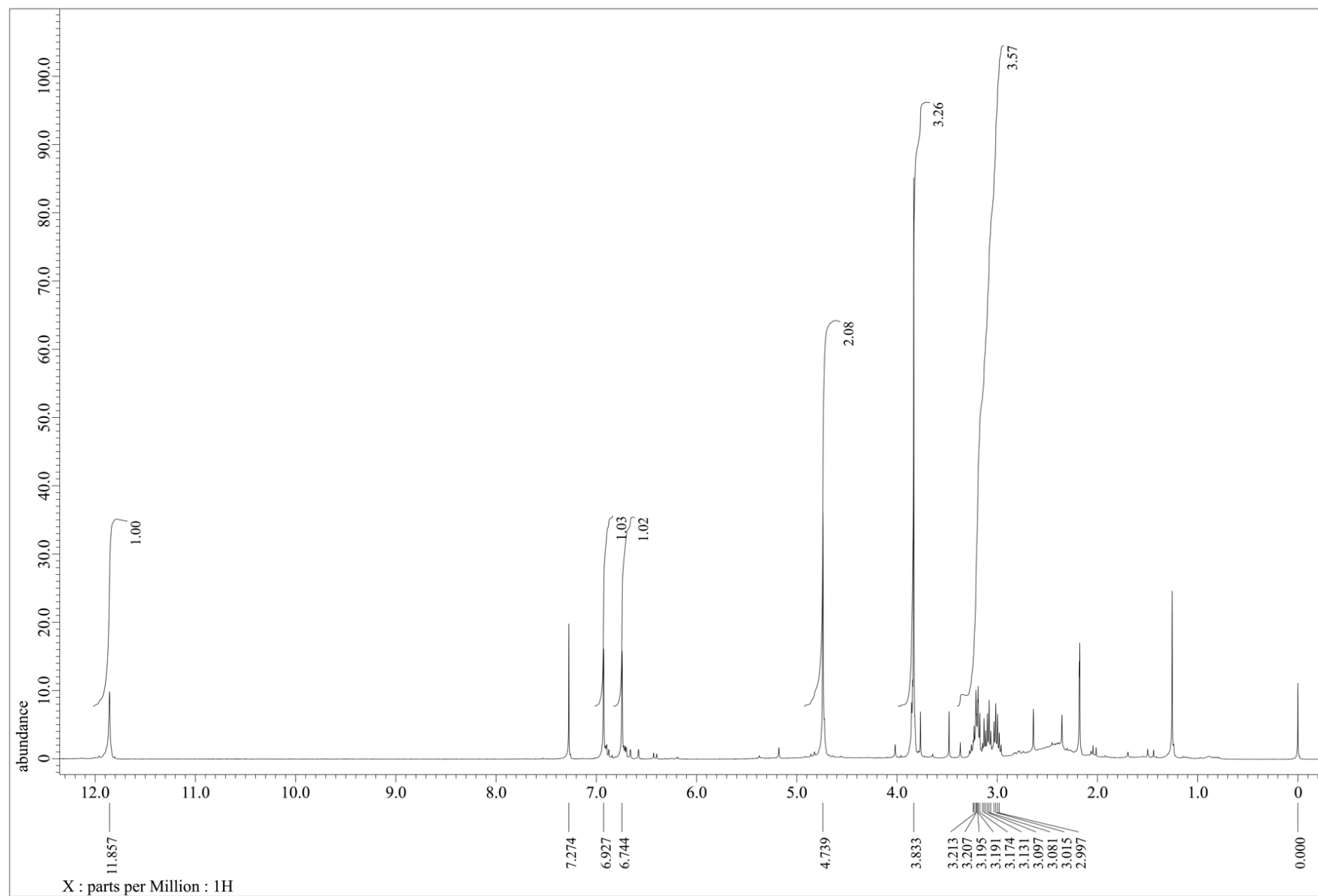


Figure S6: ¹H NMR spectrum (400 MHz, CDCl₃) of **2**.

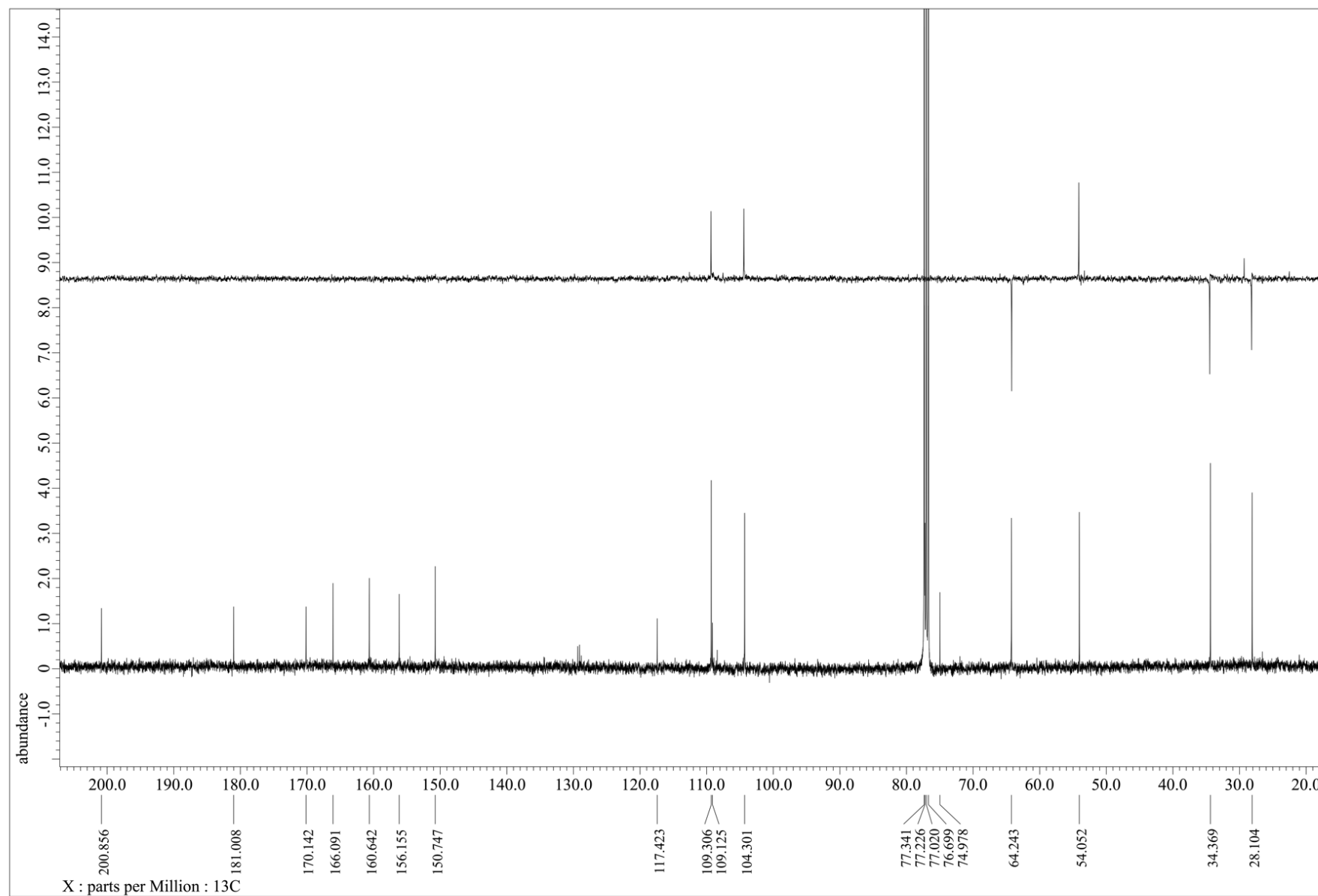


Figure S7: ^{13}C NMR and DEPT-135 spectra (100 MHz, CDCl_3) of **2**.

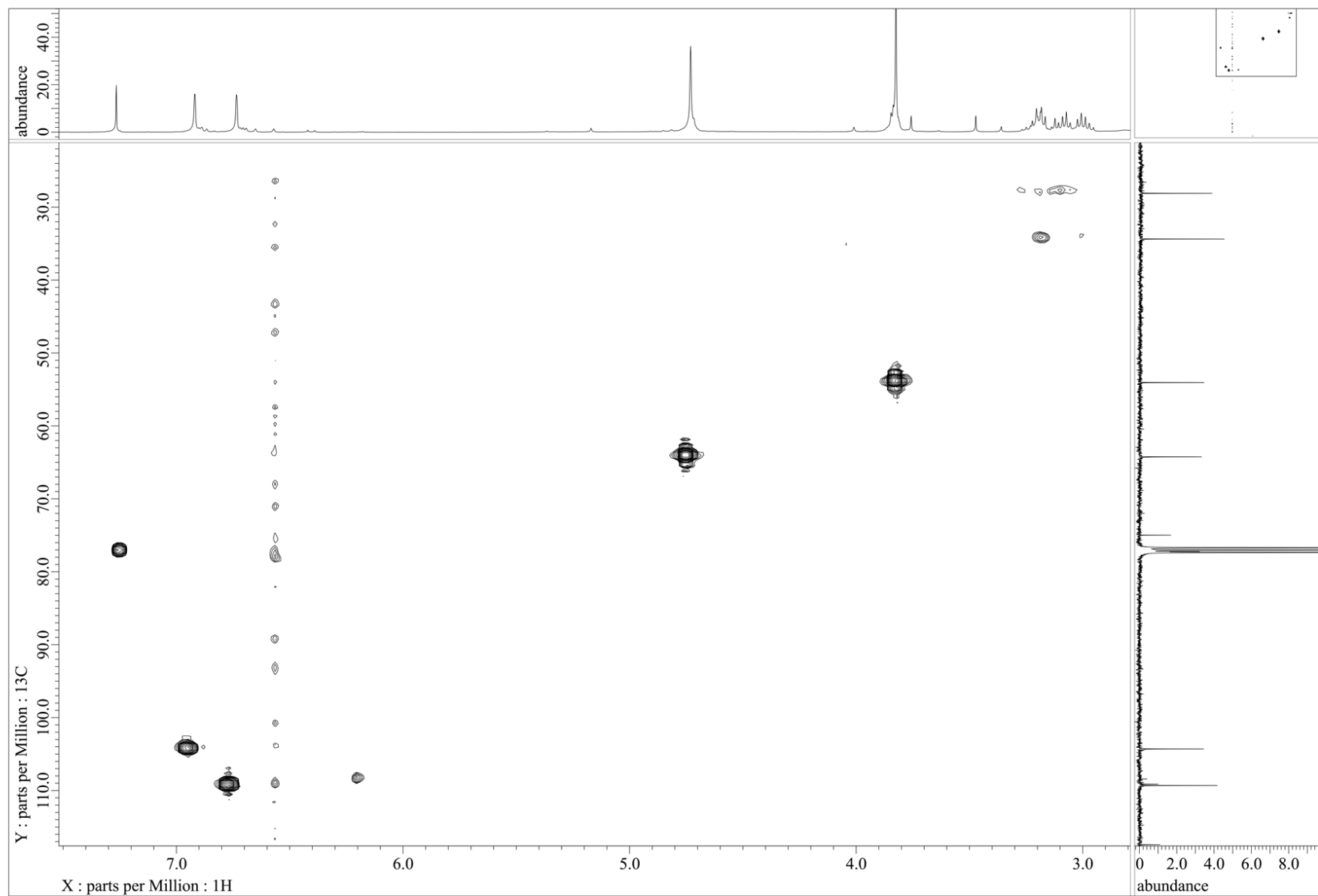


Figure S8: HMQC spectrum (CDCl₃) of **2**.

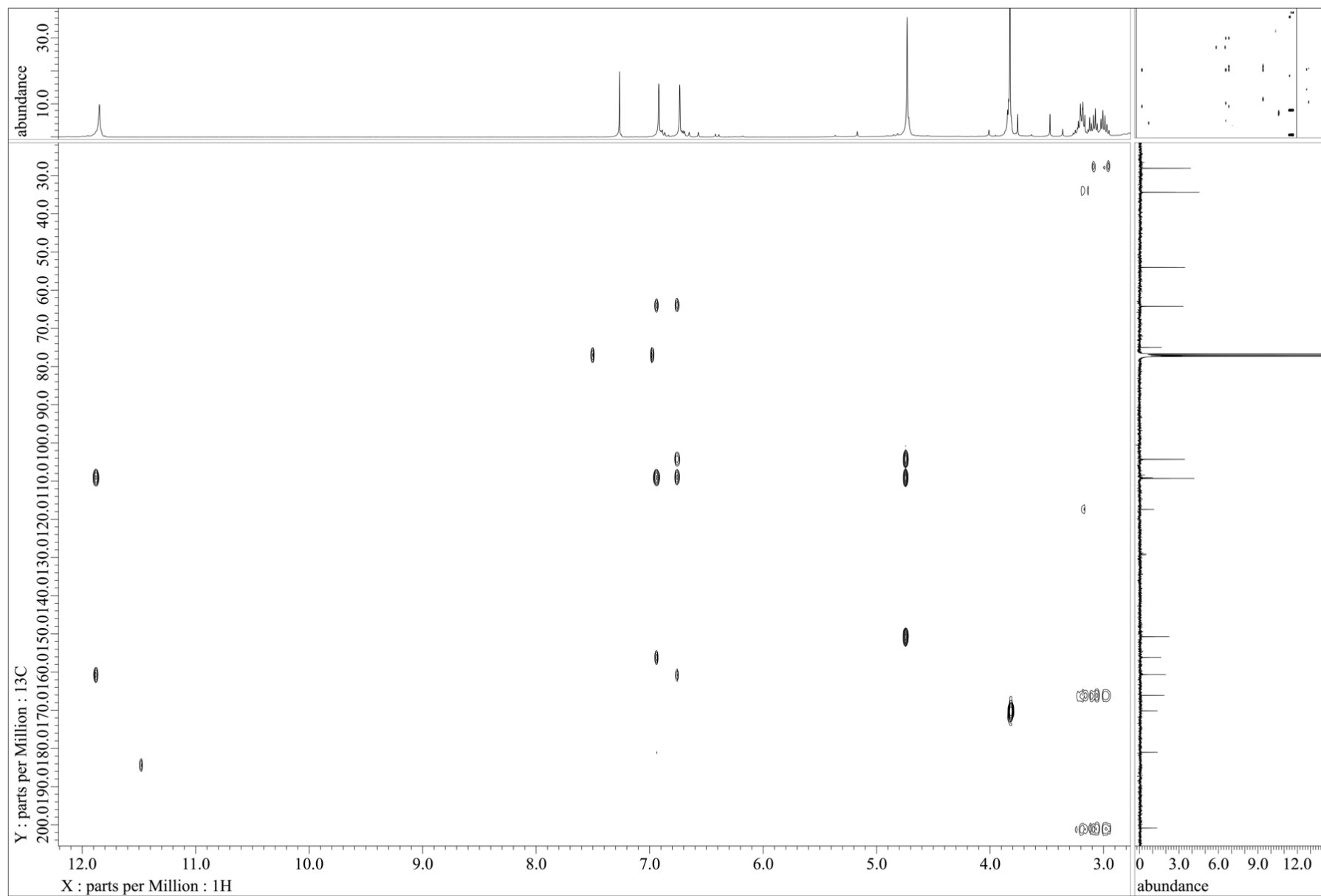


Figure S9: HMBC spectrum (CDCl_3) of **2**.