

Supporting Information

for

Intramolecular bridges formed by photoswitchable click amino acids

Christian Hoppmann*, Ronald Kühne and Michael Beyermann

Address: Department of Chemical Biology, Leibniz-Institut für Molekulare Pharmakologie, Robert-Rössle-Strasse 10, 13125 Berlin

Email: Christian Hoppmann - hoppmann@fmp-berlin.de

* Corresponding author

CD spectra of **1** and **2** and ESI–MS spectra of peptide **2**
in the presence of GSH

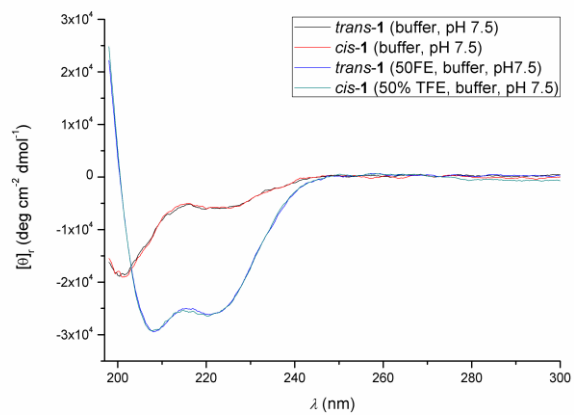


Figure S1: Circular dichroism spectra of peptide **1** in buffered solution and 50% TFE.

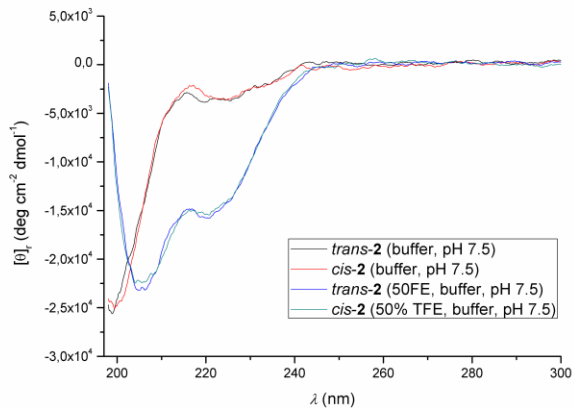


Figure S2: Circular dichroism spectra of peptide **2** in buffered solution and 50% TFE.

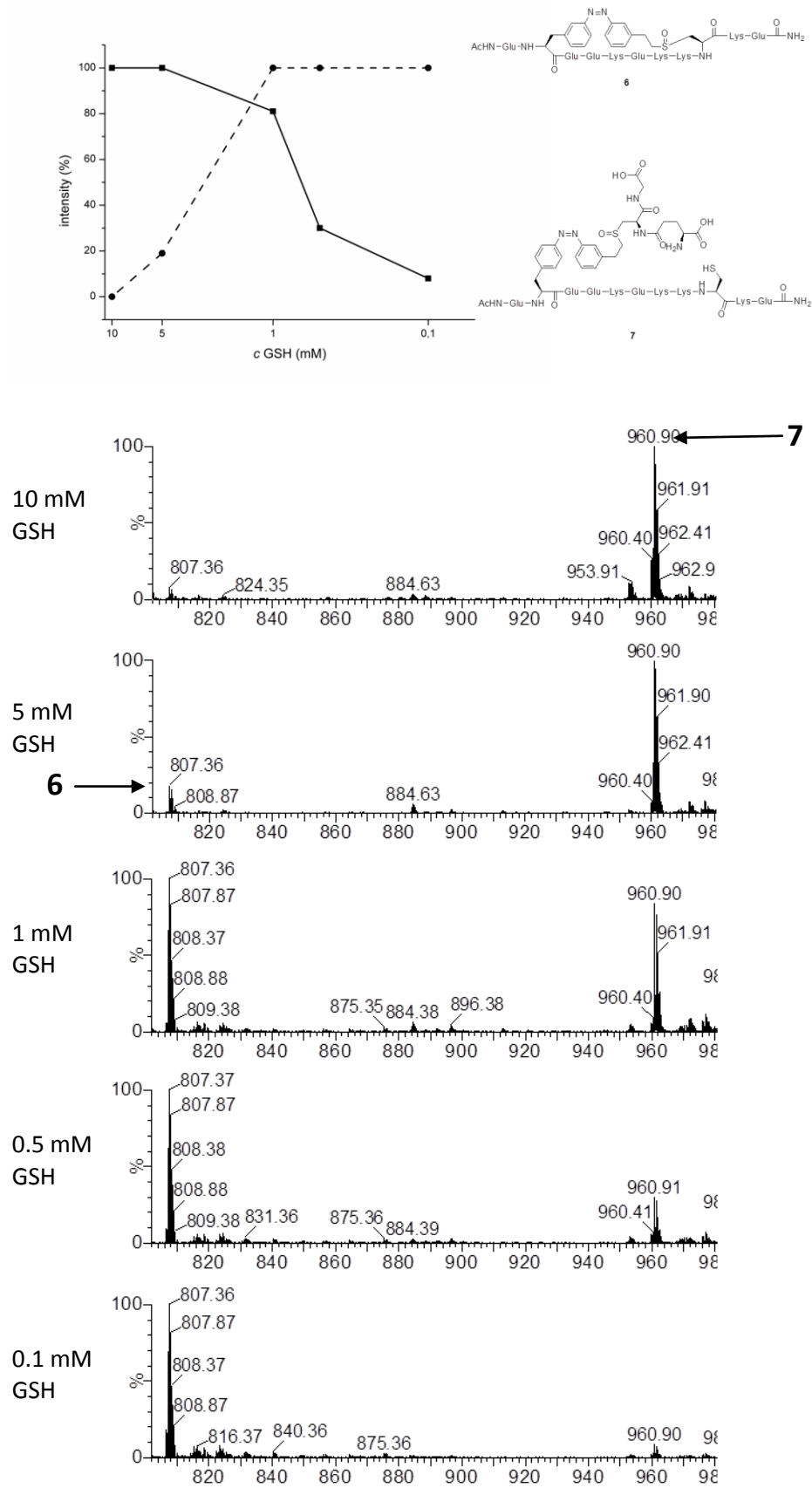


Figure S3: Intramolecular vs intermolecular thiol click reaction of peptide **2** with *i,i+7* helical spacing.