



Supporting Information

for

Polarity in cuticular ridge development and insect attachment on leaf surfaces of *Schismatoglottis calyptрата* (Araceae)

Venkata A. Surapaneni, Tobias Aust, Thomas Speck and Marc Thielen

Beilstein J. Nanotechnol. **2021**, *12*, 1326–1338. doi:10.3762/bjnano.12.98

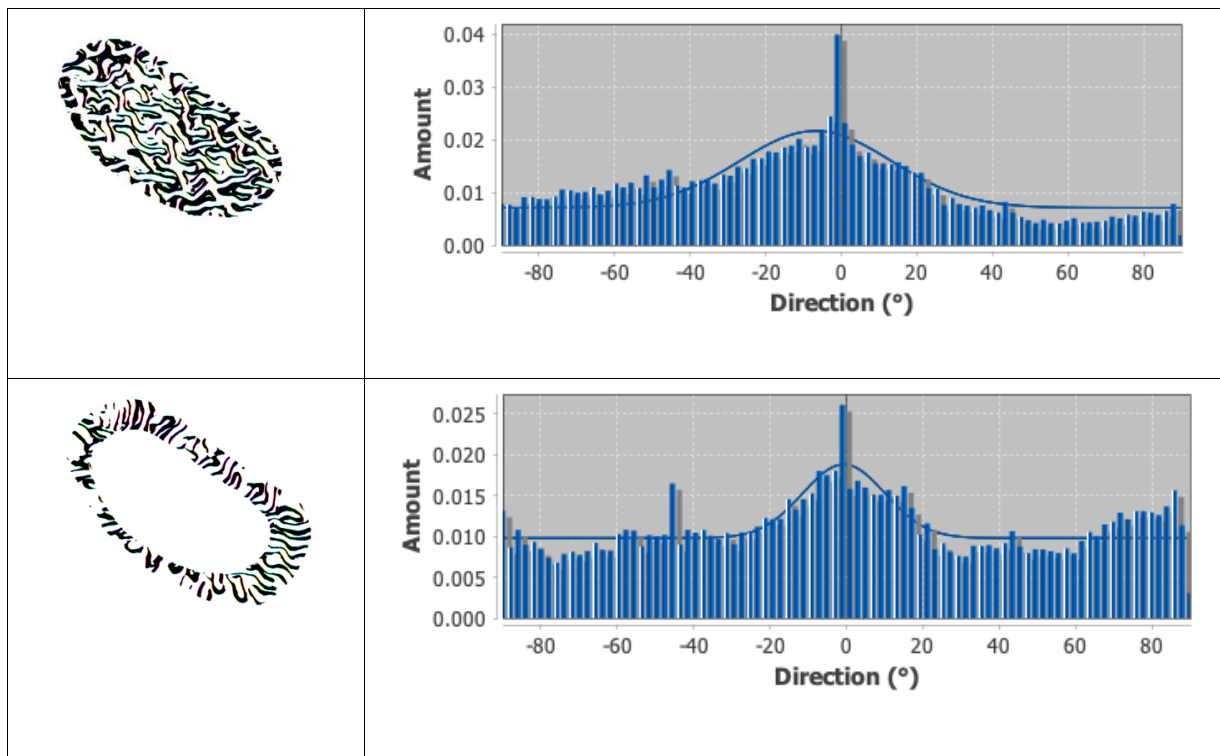
Orientation of ridges in ridge islands and periphery.

The orientation data was collected from the ridge islands and the periphery of a cell using the directionality plugin of the ImageJ software. The data shows typical variation in the ridge orientation (angle with horizontal) at different growth stages

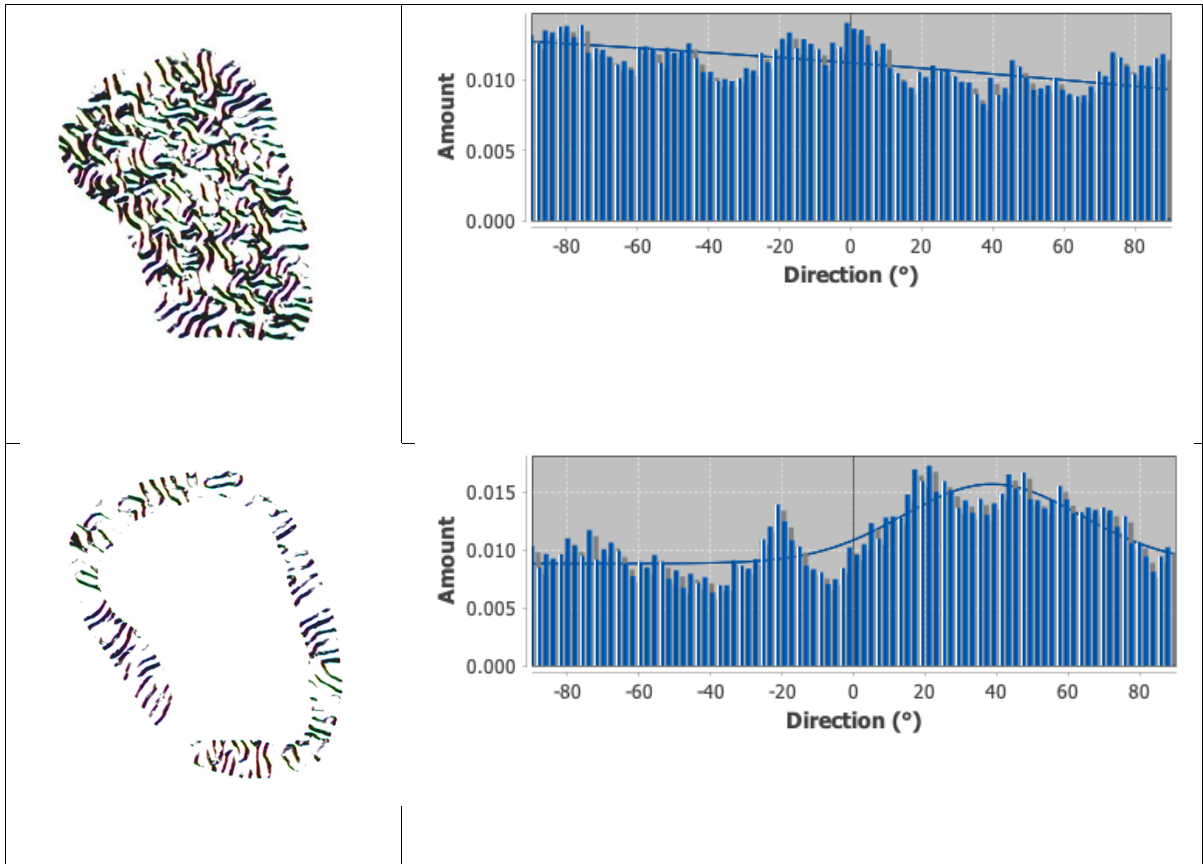
Orientation of ridges in ridge islands and periphery

Detailed description: The orientation data was collected from the ridge islands and the periphery of a cell using the directionality plugin (version 2.3.0) of the ImageJ software. The data shows typical variation in the ridge orientation in a single ridge island and periphery (angle with horizontal – perpendicular to leaf's midrib) at different growth stages in the form of frequency histograms.

Stage 2A



Stage 3



Stage 4

