

Supporting Information

for

Gas sensing properties of nanocrystalline diamond

at room temperature

Marina Davydova^{1*}, Pavel Kulha², Alexandr Laposa², Karel Hruska¹, Pavel Demo¹ and Alexander Kromka¹

Address: ¹Institute of Physics, Academy of Science of the Czech Republic, Cukrovarnicka 10, 16200 Prague, Czech Republic and ²Department of Microelectronics, Faculty of Electrical Engineering, CTU in Prague, Technicka 2, 16627 Prague, Czech Republic

Email: Marina Davydova* - davydova@fzu.cz

* Corresponding author

Additional AFM and XRD experimental results

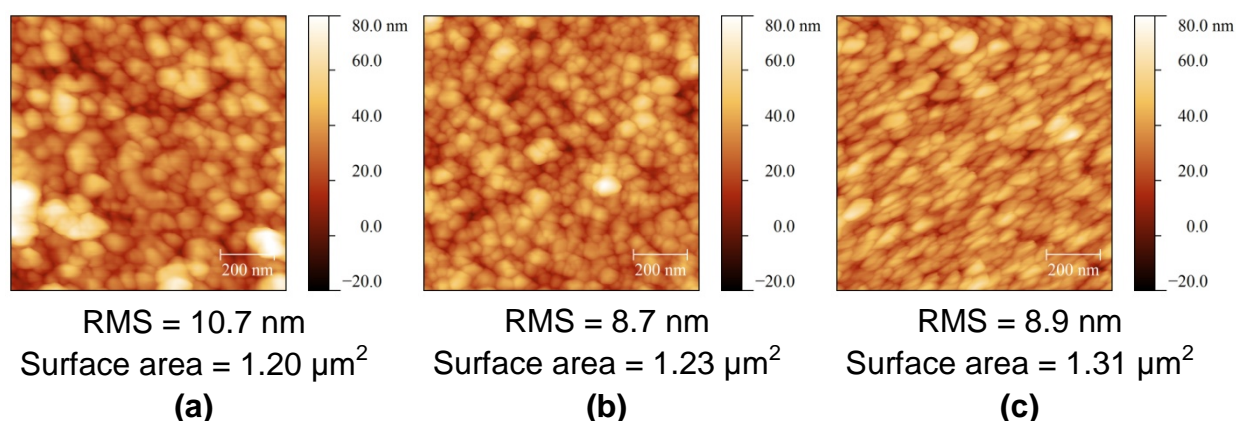


Figure S1: AFM surface topography of the deposited NCD-coated sensor substrate: **(a)** with separation of 200 μm and nucleation time of 40 min **(b)** with separation of 50 μm and seeding time of 40 min, and **(c)** with separation of 50 μm and nucleation time of 2 min.

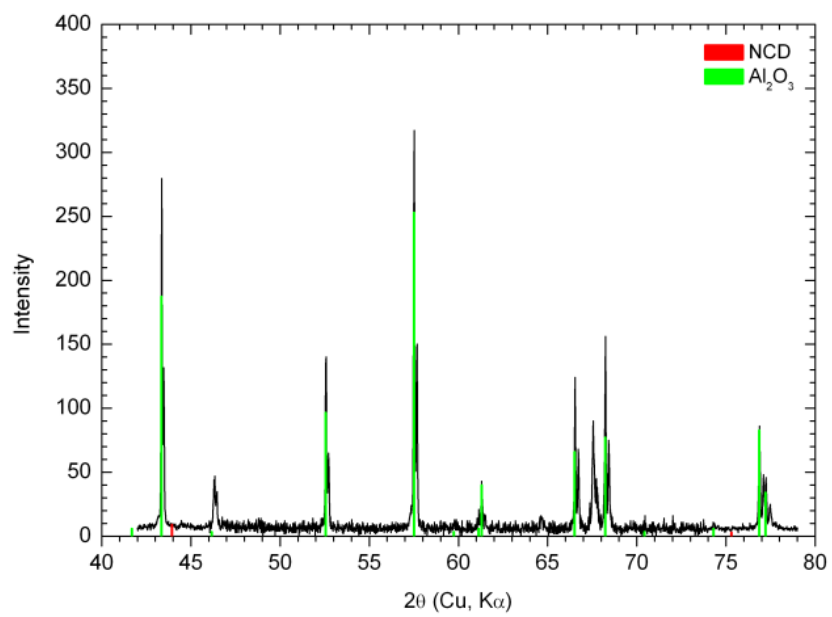
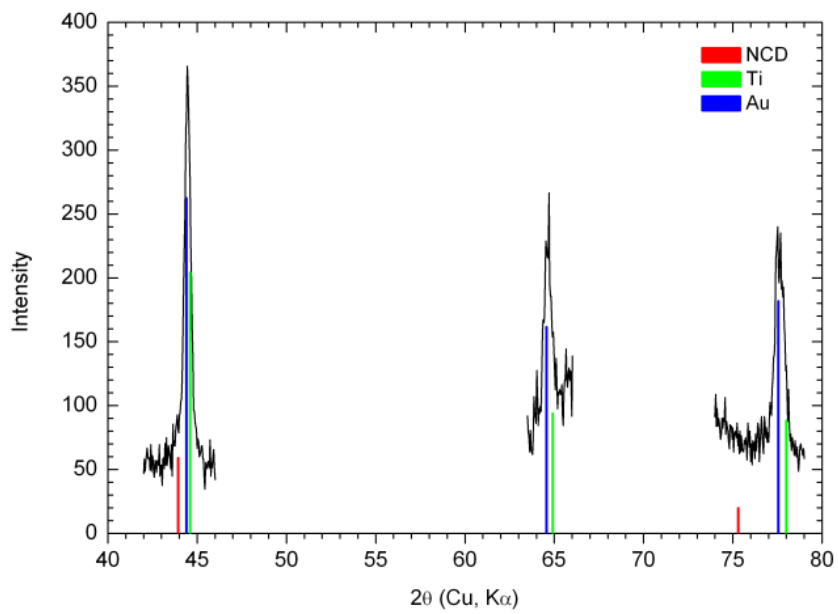


Figure S2: XRD patterns of sensor substrates covered with H-terminated diamond.