

Supporting Information

for

Synthesis of $[\{AgO_2CCH_2OMe(PPh_3)\}_n]$ and theoretical study of its use in focused electron beam induced deposition

Jelena Tamuliene^{*1,§}, Julian Noll², Peter Frenzel², Tobias Ruffer², Alexander Jakob²,
Bernhard Walfort² and Heinrich Lang^{*2,¶}

Address: ¹Vilnius University, Institute of Theoretical Physics and Astronomy, Sauletekio av.
3, Vilnius, Lithuania and ²Faculty of Natural Sciences, Institute of Chemistry, Inorganic
Chemistry, D-09107 Chemnitz, Germany

Email: Jelena Tamuliene - Jelena.Tamuliene@tfai.vu.lt;

Heinrich Lang - heinrich.lang@chemie.tu-chemnitz.de

*Corresponding author

§ Phone +370 5-223-34644; Fax +370 5-2125361

¶ Phone +49 371-531-21210; Fax +49 371-531-21219

Additional figures and tables

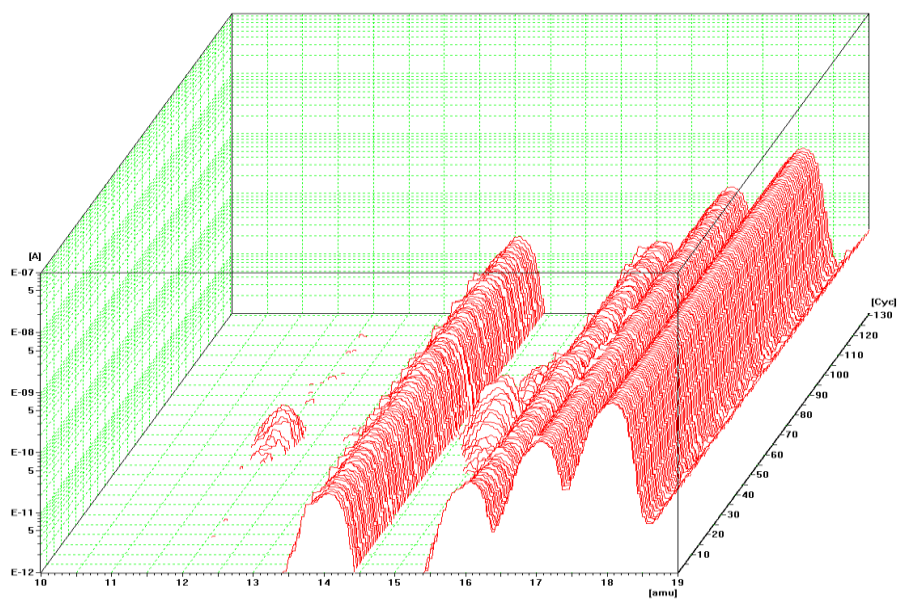


Figure S1: Selected masses ($m/z = 10-19$) of a time-resolved MS spectra during TG measurements of **2**.

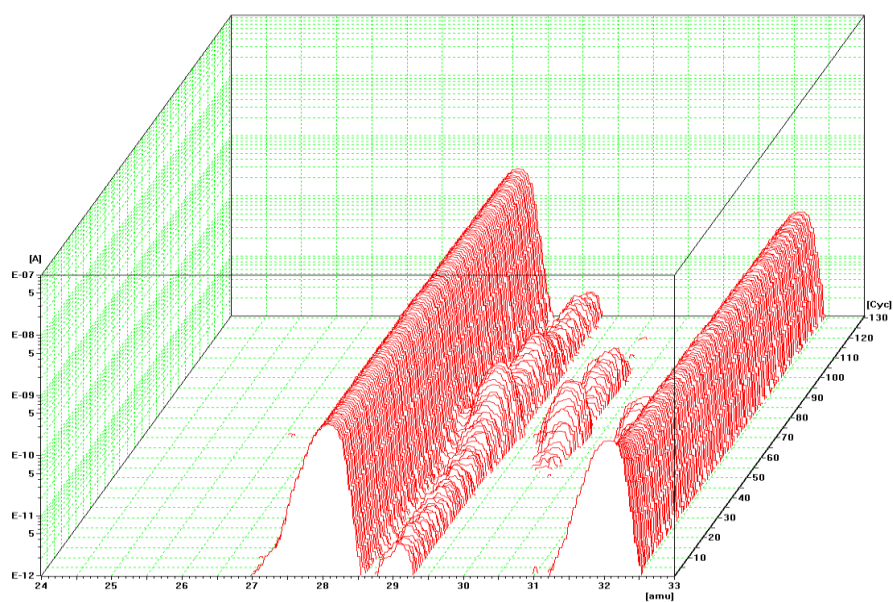


Figure S2: Selected masses ($m/z = 24-33$) of a time-resolved MS spectra during TG measurements of **2**.

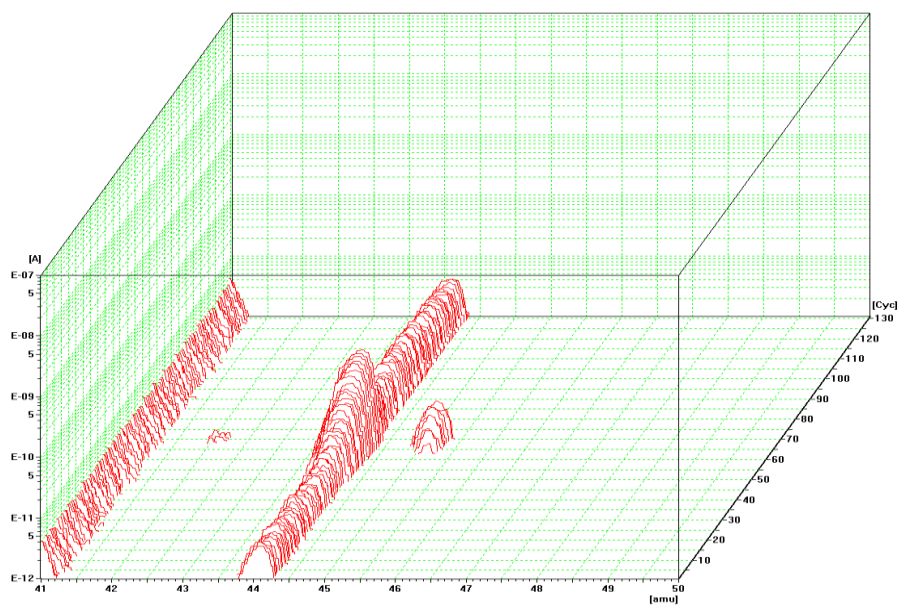


Figure S3: Selected masses ($m/z = 41-50$) of a time-resolved MS spectra during TG measurements of **2**.

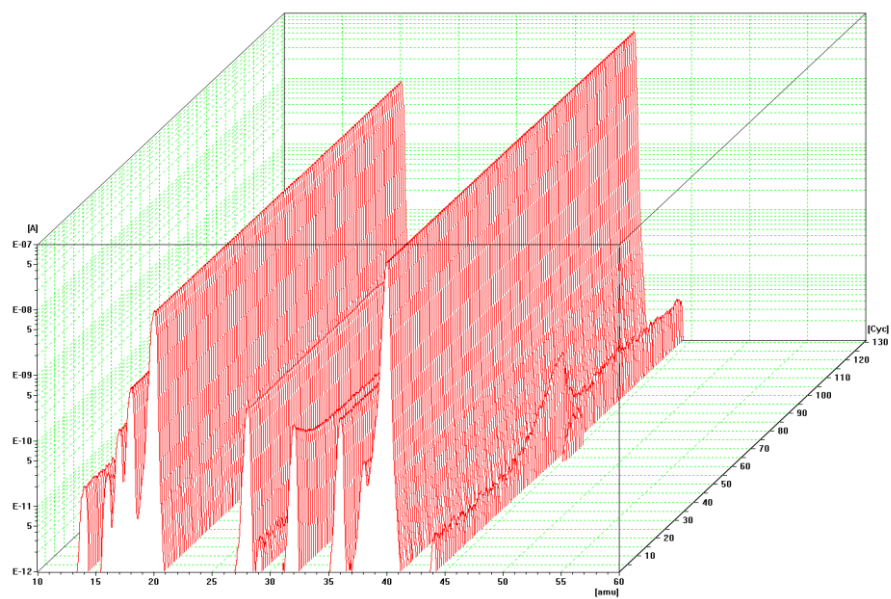


Figure S4: Selected masses ($m/z = 10-60$) of a time-resolved MS spectra during TG measurements of **2**.

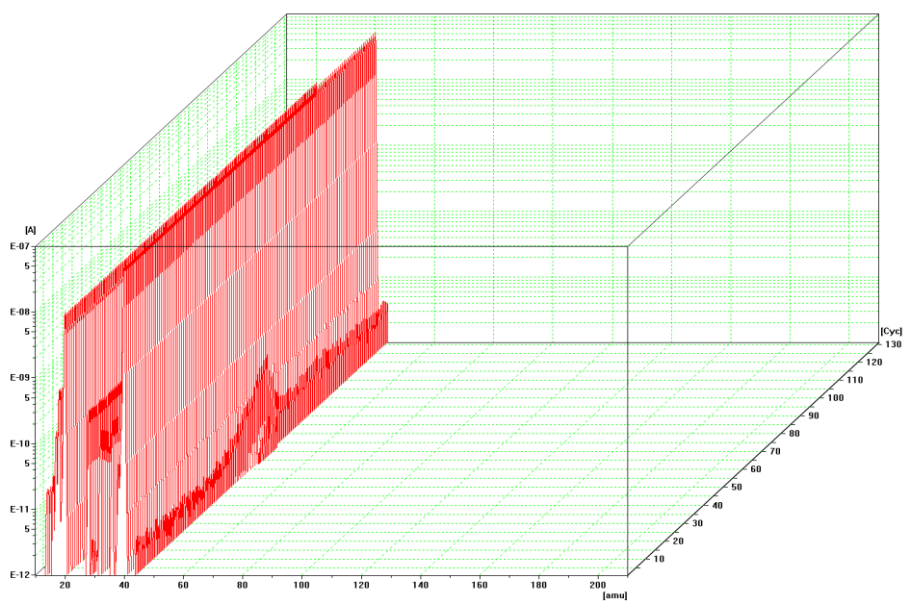


Figure S5: Selected masses ($m/z = 10-210$) of a time-resolved MS spectra during TG measurements of **2**.

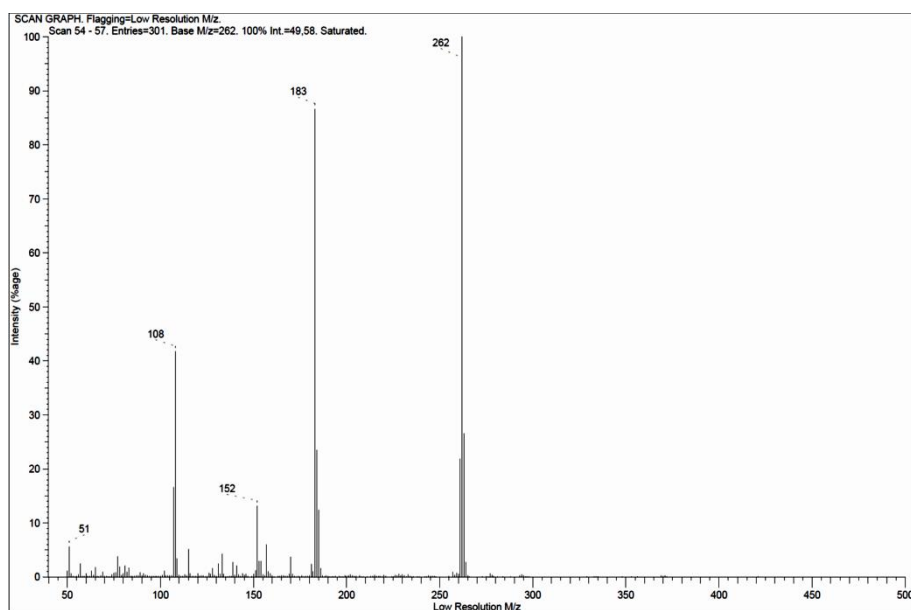


Figure S6: EI-MS spectra of **2** ($m/z = 40-500$).

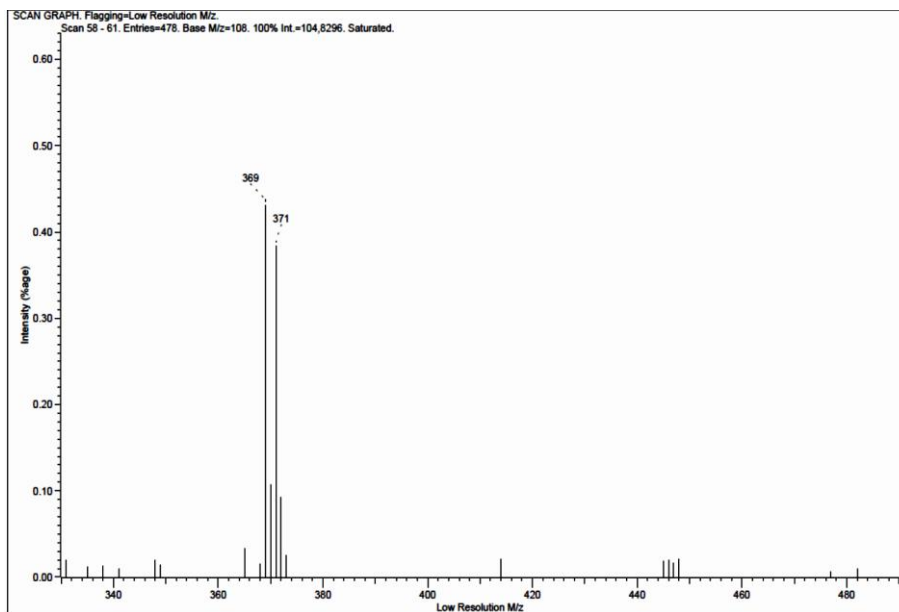


Figure S7: EI-MS spectra of **2** ($m/z = 330\text{--}490$).

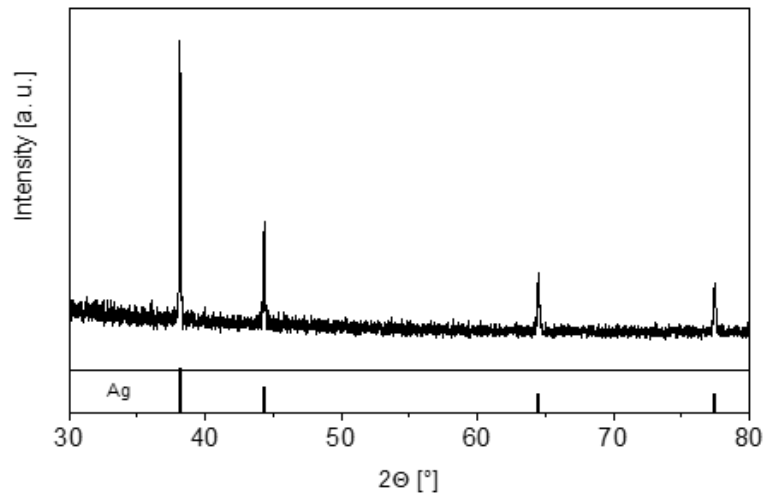


Figure S8: PXRD pattern of elemental silver after heat treatment of **1** (500 °C) with reflections of silver [ICDD: 03-065-2871].

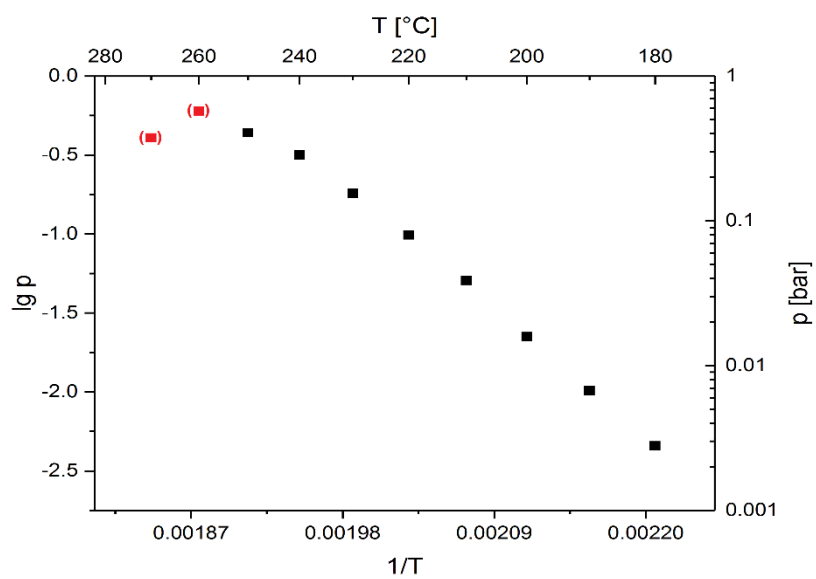


Figure S9: Vapor pressure of **2** (N_2 , gas flow 60 mL min^{-1}). Red marked measurement points imply decomposition of **2**.